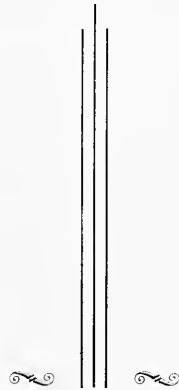
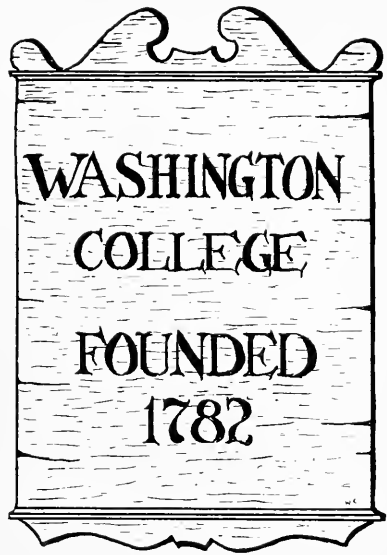




W. G. S. S.

1948



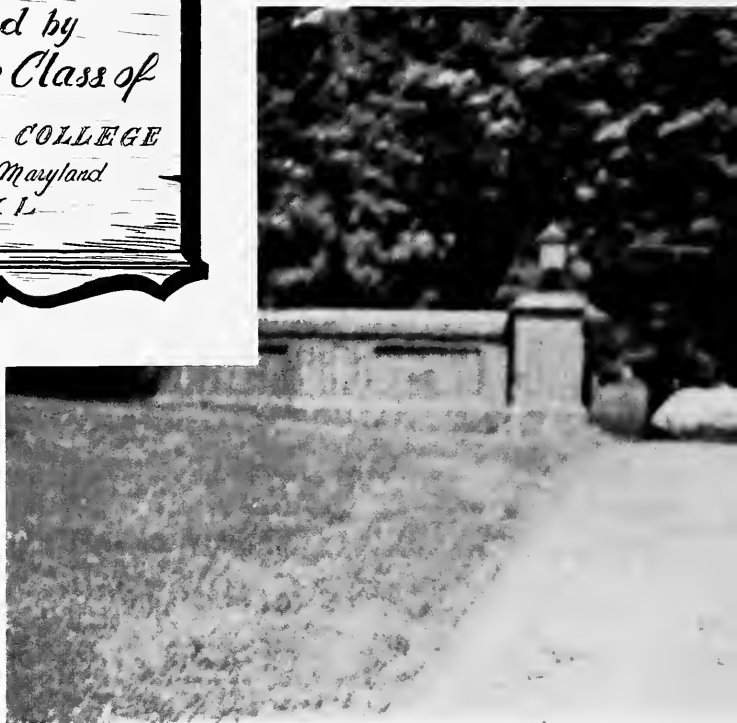
THE 1940
PEGASUS

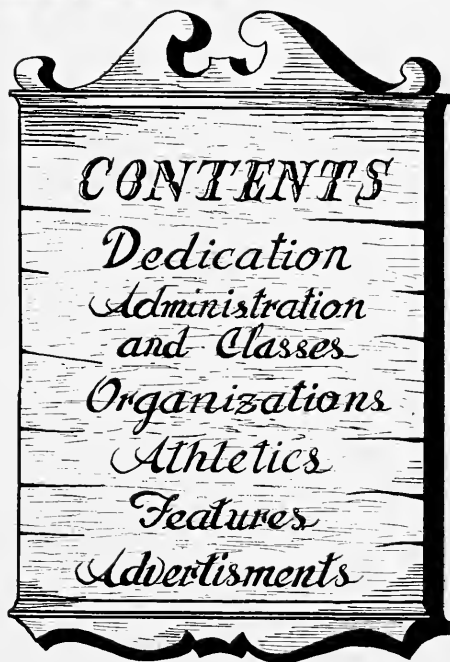
Edward Lee McCabe
EDITOR

William E. Medford
BUSINESS MANAGER

The 1940
PEGASUS

Published by
The Senior Class of
WASHINGTON COLLEGE
Chestertown, Maryland
MCMXL





CONTENTS

Dedication

Administration
and Classes

Organizations

Athletics

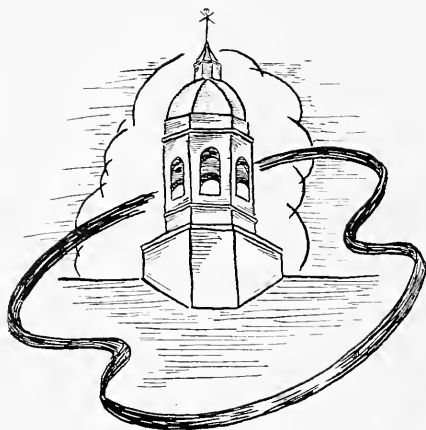
Features

Advertisements

DEDICATED TO

GEORGE AVERY BUNTING

HENRY ARMITT BROWN DUNNING



DUNNING HALL



BUNTING LIBRARY

George Avery Bunting, who contributed largely to the erection of the library which now bears his name. The building was dedicated on February 24, 1940, and has already been of invaluable service to the general student body of Washington College.

Henry Armitt Brown Dunning, who made possible the erection of Dunning Hall. Dunning Hall, which was dedicated and opened for general use on January 16, 1940, contains well equipped and adequate laboratories for all the science departments in addition to a lecture hall, recitation room, and store rooms.



GEORGE AVERY BUNTING, AB., S.D.



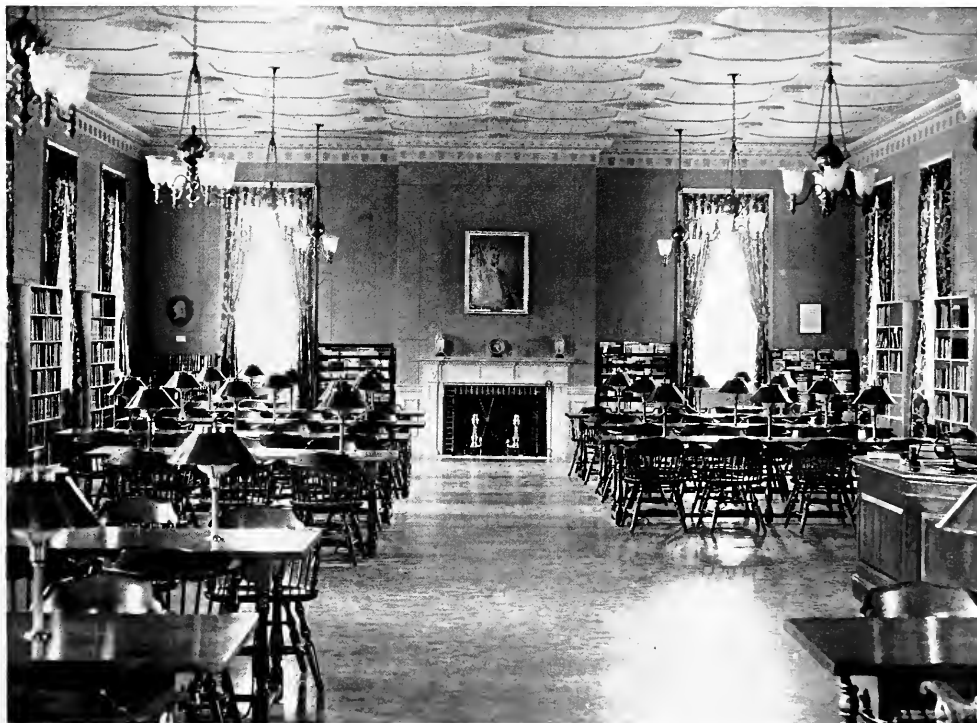
HENRY ARMITT BROWN DUNNING, S.D.



George Avery Bunting Library

The George Avery Bunting Library was erected in 1940, as a gift from Dr. Bunting and fills a long-felt college need. On the opposite page is a view of the large modern reading room in this building.

Reading Room
of Bunting Library





George Avery Bunting Library

The George Avery Bunting Library was erected in 1940, as a gift from Dr. Bunting and fills a long-felt college need. On the opposite page is a view of the large modern reading room in this building.

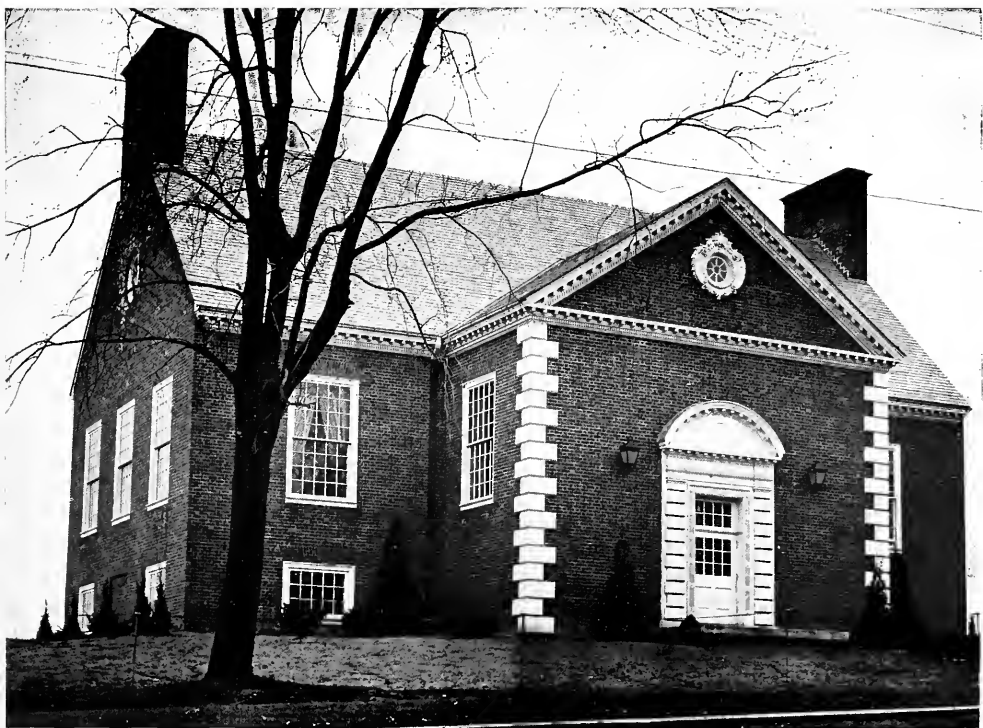
Reading Room
of Bunting Library



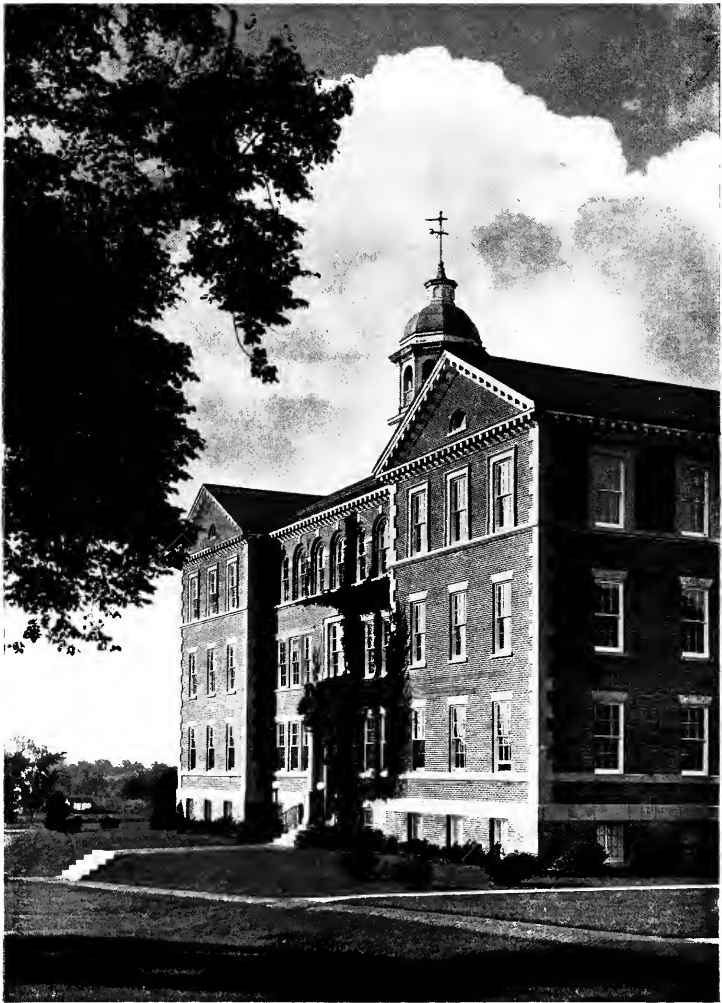
Dunning Hall



The Dunning Hall, another recent addition to the college, was donated by Dr. H. A. B. Dunning, and is invaluable to all of the science departments.



Hodson Hall



William Smith Hall



Cain Memorial Gymnasium

Reid Hall





Faculty Row

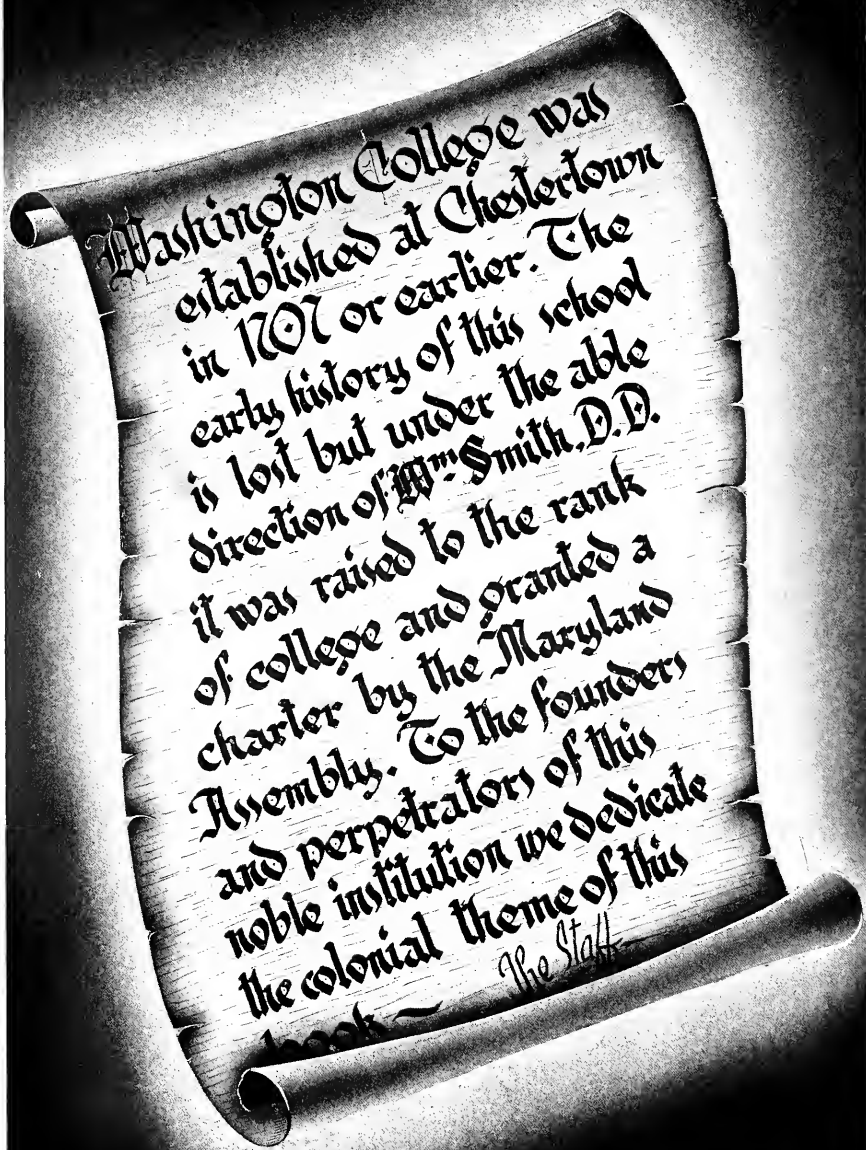


Wm. Smith Hall and Flag Pole

IN MEMORIAM



Dr. James Roy Micou, vice-president emeritus of Washington College, was born at Tappanock, Virginia, in 1859. He received his early education in a private school and later graduated from the University of Virginia with his A.B. After leaving the university, he began teaching and in February, 1887, came to Washington College as an instructor in French and German. After forty years on the hill, during which time he taught Greek, Chemistry, and Physics in addition to his regular subjects, he retired from active teaching. He never lost interest in college activities and will always be remembered as a dear and loyal friend.



Washington College was established at Chestertown in 1707 or earlier. The early history of this school is lost but under the able direction of Wm. Smith, D.D. it was raised to the rank of college and granted a charter by the Maryland Assembly. To the founders and perpetrators of this noble institution we dedicate the colonial theme of this book ~

The Staff



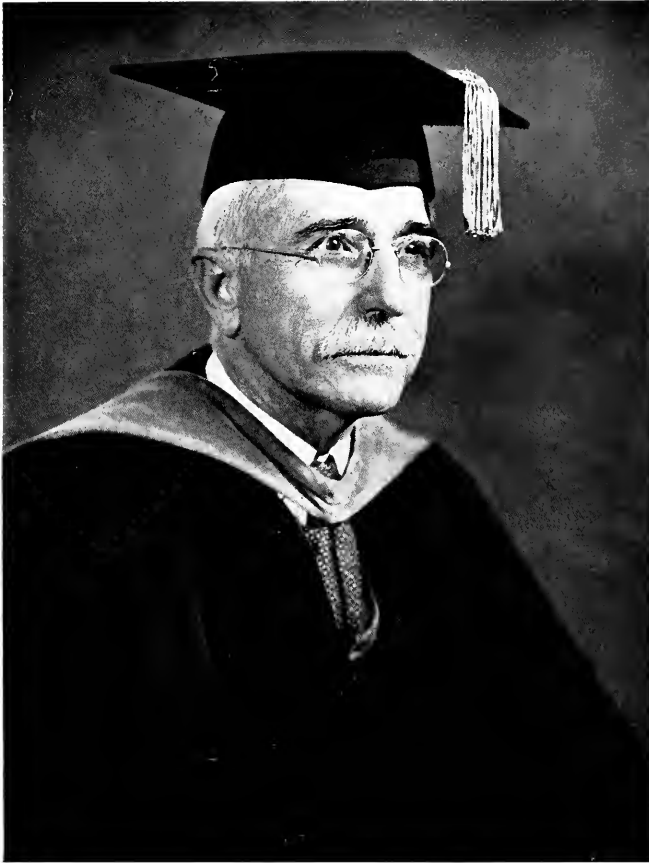
ADMINISTRATION
AND CLASSES



DR. GILBERT WILCOX MEAD

PRESIDENT

*A.B., Litt.D., Allegheny College; A.M., Columbia
University; LL.D., Birmingham-Southern
College; Phi Beta Kappa*



DR. J. S. WILLIAM JONES

DEAN

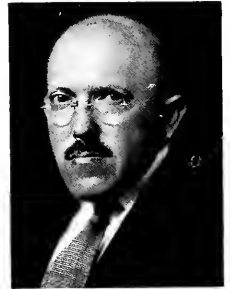
*A.M., Sc.D., Washington College; Litt.D.,
Franklin and Marshall*



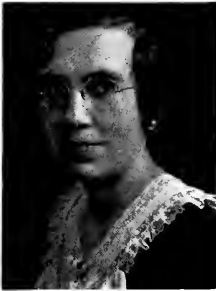
Dr. J. S. William Jones
*Dean and Professor
of Mathematics*



Dr. William R. Howell
*Registrar and Professor of
Economics and Sociology*



Dr. Fredk. G. Livingood
Professor of Education



Dr. Estlier M. Dole
*Professor of History and
Government*



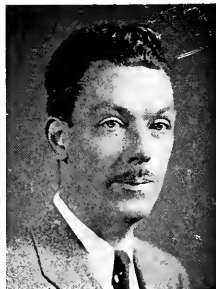
Dr. G. Van A. Ingalls
Professor of English



Dr. Kenneth S. Buxton
Professor of Chemistry



Dr. Arthur L. Davis
Professor of German



Dr. Julian D. Corrington
Professor of Biology



Dr. Jesse J. Coop
Professor of Physics

THE FACULTY

THE FACULTY



Mr. J. Thomas Kibler
Director of Physical Training



Dr. Lawrence Ford
*Assistant Professor of
Modern Languages*



Dr. A. Carleton Andrews
*Assistant Professor of Latin
and French*



Miss F. T. Snodgrass
*Assistant Professor of
Education*



Mr. Fredk. W. Dumschott
*Assistant Professor of History
and Government*



Mr. Paul A. Solandt
Librarian



Mr. Frank Goodwin
*Assistant Professor of
Social Science*



Miss Amanda T. Bradley
*Dean of Women
Assistant Professor of English*



Dr. Wilbur J. Robinson
*Assistant Professor of
Mathematics and Chemistry*



Dr. Winton Tolles
*Assistant Professor of English
and Public Speaking*



Mr. George L. Edatts
*Assistant Professor of
Physical Training*



Mr. James W. Johns
Business Manager



Miss Louise B. Russell
Instructor in Music



Miss Daris T. Bell
*Instructor of Physical Training
for Girls*



Mr. Roy M. Chatters
Instructor in Biology



Miss Margaret Thornton
Assistant Librarian

THE FACULTY

Board of Visitors and Governors

Term Expires June 1940

ALUMNI MEMBERS

Fred G. Usilton.....	Chestertown
Dudley G. Roe.....	Sudlersville
J. Owen Knotts.....	Denton
Walter S. McCord.....	Easton

Term Expires June 1941

GUBERNATORIAL MEMBERS

J. Howard Phillips.....	Cambridge
Avery W. Hall.....	Salisbury
George A. Bunting.....	Baltimore

Term Expires June 1942

ALUMNI MEMBERS

William D. Corddry.....	Snow Hill
Benjamin A. Johnson.....	Salisbury
R. Brice Whittington.....	Marion Station
Ernest A. Howard.....	Wilmington, Del.

Term Expires June 1943

GUBERNATORIAL MEMBERS

Edward D. E. Rollins.....	Elkton
Samuel E. Shannahan.....	Easton
Elias W. Nuttle.....	Denton
F. Stanley Porter.....	Baltimore

Term Expires June 1944

ALUMNI MEMBERS

Hiram S. Brown.....	Rye, N. Y.
P. Watson Webb.....	Cambridge
W. Lester Baldwin.....	Baltimore
W. G. Jack.....	Port Deposit

Term Expires June 1945

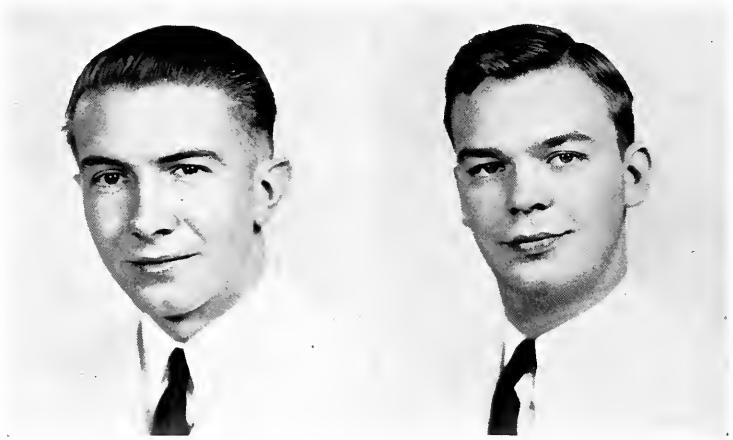
GUBERNATORIAL MEMBERS

S. Scott Beck.....	Chestertown
James W. Chapman, Jr.	Baltimore
Arthur C. Humphreys.....	Snow Hill
T. Harris Smith.....	Queenstown

The President of the College, ex-officio.



THE 1940 PEGASUS OF



OWEN RAYMOND ANDERSON, JR.

History

Λ X A

English

Historical Society 5, 4; Treasurer 4; Lambda Chi Alpha 5, 4; Orchestra 1, 2, 3, 4.

Quiet Gentleman; ambitious and amiable; prodigious pedagogue and enthusiastic bowler; nice to know.

FRANK OREM BAYNARD

French

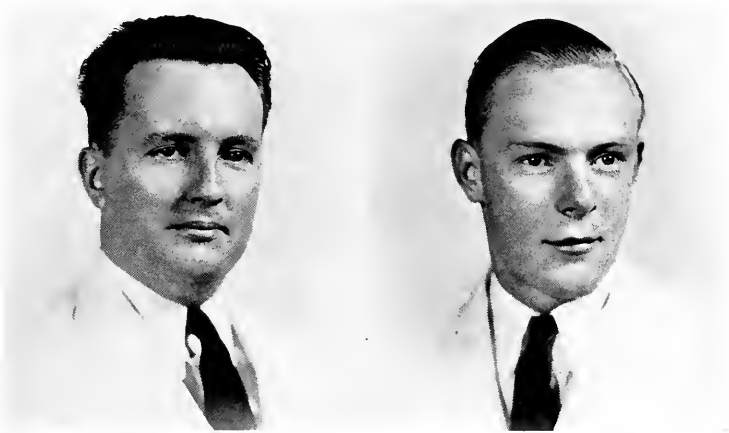
Λ X A

Sociology

Phi Sigma Tau 1; Lambda Chi Alpha 1, 2, 5, 4; Orchestra 1, 2, 3, 4; Glee Club 1, 2; Washington Players 1, 2; Mt. Vernon Literary Society 2; Y. M. C. A. 1, 2.

Fairlee Romeo; public speaker; determined and "frank"; good-natured ministerial student.

WASHINGTON COLLEGE



WALTER LEE BECKWITH

History

Sociology

Energetic Minister and Student; calm and dependable; able historian and persevering French student.

EDWARD ROBINSON BUCK, JR.

Physics

Θ X

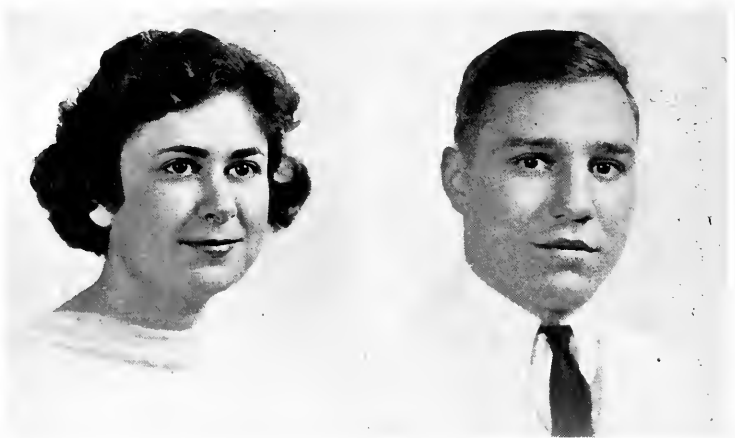
Mathematics

Theta Kappa Nu 1, 2, 3; Phi Sigma Phi 4; Theta Chi 4; Varsity Track 1, 2, 3, 4; Varsity Club 2, 3, 4; Intramural Basketball 1, 2, 4.

"Four-Forty Flash"; lover of the old school; genial physicist; well-groomed and facetious.



THE 1940 PEGASUS OF



EVELYN BARRIE CAPLAN

History

French

Transfer from Towson State Teachers College
2; Dramatic Club 1; Rural Club 1; Classical
Society 2, 5, 4; Secretary 5, Treasurer 4;
Cercle Français 3, 4; Historical Society 4;
Secretary 4; Mt. Vernon Literary Society 5,
4; Women's Student Council 5, 4; Secretary
5, President 4; Dramatic Club 4; Basketball
2; Hockey 5; "Elm" Staff 5, 4; News Editor
4

Dignified Council President; generous and
sincere. Popular transfer, dependable execu-
tive, and a winsome personality.

WALTER WHITE CLAGGETT

History

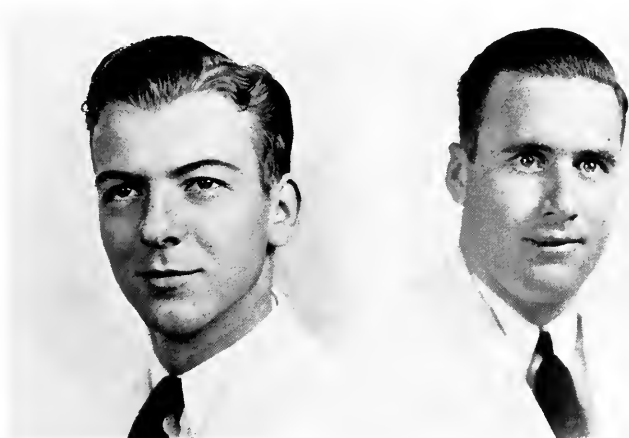
Δ X A

Government

Lambda Chi Alpha 4; Baseball manager 1, 2,
5, 4; Varsity Club 4; Historical Society 2, 5,
4; Paul E. Titsworth Debate Club 1, 2;
Y. M. C. A. 1, 2; Meritorious Scholarship
2, 5, 4.

"Plit" Campus Confucius; best coon hunter
on the Sho'; baseball manager, good student,
and leader of the boys.

WASHINGTON COLLEGE



ROBERT LEE CLARK, JR.

History

K A

English

Kappa Alpha 1, 2, 3, 4; IX 1, 2, 5; III 4; Assistant Manager Football 1, 2, 5; Manager 4; Washington Players 1, 2; Glee Club 1, 2; Intramural Basketball 2, 4.

Dining Hall Diplomat; smooth dancer, glib conversationalist and likable personality; poised and courteous.

JOHN LAWRENCE COLLINS

Mathematics

Θ X

History

Varsity Football 1, 2, 5, 4; Captain 4; Varsity Basketball 1, 2, 5, 4; Theta Kappa Nu 1, 2, 5; Phi Sigma Phi 4; Theta Chi 4; Varsity Club 1, 2, 5, 4; Secretary 5; Vice-President 4; Cercle Français 5; Meritorious Scholarship.

"Chuck"—Popular Linesman and Basketeer; athletic student from Jersey; not the bachelor type.



THE 1940 PEGASUS OF



WILLIAM JENKINS COLLINS

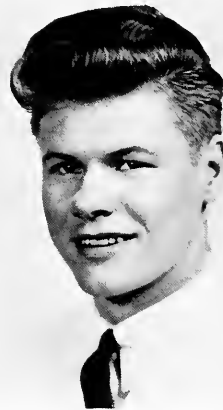
Economics

K A

History

Varsity Football 2, 3, 4; Varsity Club 2, 3, 4;
Kappa Alpha 1, 2, 3, 4; Intramural Basketball 1, 2, 3, 4; Tennis 1.

"Puz"—Easy-going Gridironist; home-spun wit; good-natured, generous and dependable; a power house of potentialities.



JOHN ADDIS COPPLE

History

K A

French

Baseball 1, 2, 3, 4; All-Maryland 1, 2, 3; Historical Society 2, 3, 4; President 3; Who's Who in American Colleges and Universities 4; Class Vice-President 2; Kappa Alpha 4; Omicron Delta Kappa 3, 4; Student Council 2, 3, 4; Varsity Club 2, 3, 4; Cercle Français 4; Intramural Basketball 1, 2, 3; Merit Scholarship 2, 3, 4.

Sensational Hurler; "Father of the Freshmen"; subtle historian and unassuming leader.

WASHINGTON COLLEGE



HENRY VanBIBBER CRAWFORD

Chemistry

Mathematics

Intramural Basketball 1, 2, 5, 4; Intramural Soccer 4.

Lanky World Vagabond; persistent student and reserved chemist; friendly and conservative.



HELEN VIRGINIA CREW

History

Latin

Basketball 5, 4; Archery 1, 2, 5, 4; Historical Society 5, 4; Classical Society 5, 4.

Attractive Day Student; outstanding linguist and athlete; reserved, calm and capable.



THE 1940 PEGASUS OF



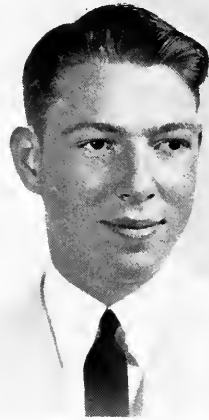
WILLIAM BAKER CRONIN

Chemistry

Transfer from Western Maryland College 3;
Chemistry Club 1, 2; Camera Club 1, 2;
Art Club 1, 2; Ping-Pong Team 1, 2; Intra-
mural Basketball 1, 2, 3, 4; Y. M. C. A. 1, 2,
3, 4; Chem-Physics Society 3, 4.

Scientific Transfer and Artist Par Excellence;
ping-pong enthusiast; friendly and cheerful;
distinctive chemistry scholar.

Biology-Physics



EDWARD PHILLIP DAVIS

French

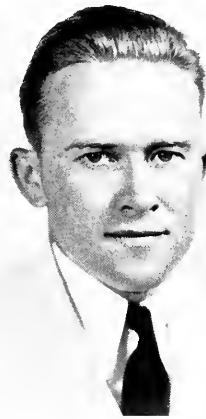
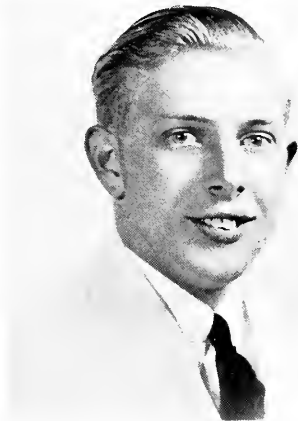
Θ X

Varsity Tennis 1, 2, 3, 4; Junior Varsity Basket-
ball 2, 3; Theta Kappa Nu 1, 2, 3; Phi Sigma
Phi 4; Theta Chi 4; Cercle Français 2, 3, 4;
Shakespeare Players 1; "Elm" Staff 1, 2.

Tennis Enthusiast; dignified and intelligent;
a confident and assertive man of fastidious
tastes.

English

WASHINGTON COLLEGE



JOHN COOPER DAVIS

ALTON EDWARD DRYDEN, JR.

German

History

Economics

Government

Intramural Basketball, Manager 2, 3; Archery 1; Track 3.

Θ X

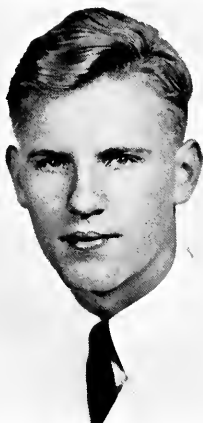
Theta Kappa Nu 2, 3; Phi Sigma Phi 4; Theta Chi 4; Intramural sports 1, 2, 3; Meritorious Scholarship 2, 4.

Industrious German Student; courteous and conscientious; impulsive conversationalist and determined idealist.

"Chesty" Eastern Shoreman; easy-going and likable; authoritative Economist; talkative and "steady."



THE 1940 PEGASUS OF



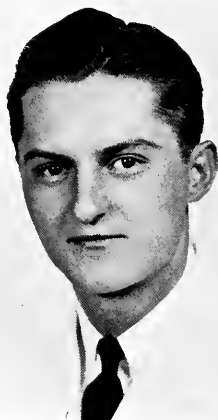
NORMAN SPEAR DUDLEY, JR.

History

Baseball 1, 2, 4; Intramural Basketball 2;
Y. M. C. A. 2.

Church Hill Flychaser; quiet, inconspicuous
and genuine; industrious student and constant
friend.

Government



JOE SIRE ELLIOTT, JR.

Economics

Lambda Chi Alpha 2, 3, 4; High Beta 4;
Assistant Basketball Manager 2, 3; Manager
4; Who's Who in American Colleges and
Universities 4; Varsity Club 4; Y. M. C. A.
1, 2, 5; Economics Assistant 4; Inter-Frater-
nity Council 4; Baseball 1; Meritorious in
Scholarship 3, 4.

"Sun-Kissed Lad from Ocean City"; eco-
nomics specialist and industrious basketball
manager; well-groomed and outstanding.

AXA

Mathematics

WASHINGTON COLLEGE



ROBERT LEWIS EVERETT

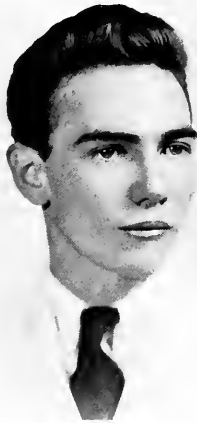
History

Θ X

Government

Theta Chi 4; Theta Kappa Nu 2, 5; Phi Sigma Phi 4; Baseball 1, 2, 5, 4; Intramural sports 1, 2, 3, 4; Football 1, 2; Varsity Club 2, 5, 4; Historical Society 2, 5, 4; Chemistry Society 1.

Hard-hitting Batsman and Outdoor Man; hearty extravert; cheerful and happy-go-lucky.



WILLIAM HUEY FORD

History

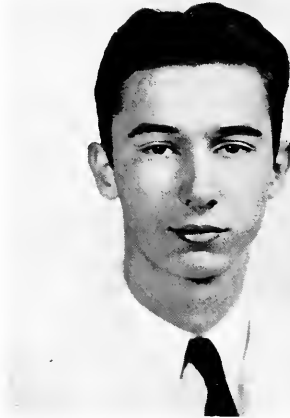
Mathematics

Transfer from Salisbury State Teachers College 5; Varsity Soccer 1, 2; Varsity Baseball 1, 2; Sophonis Players 1, 2; Literary Society 1; Athletic Association 1, 2; Intramural Basketball 2, 5, 4; Varsity Track 5, 4; Historical Society 5; Varsity Club 5, 4.

Fleet Miler and Letter Man; cheerful Salisbury transfer; calm and carefree.



THE 1940 PEGASUS OF



SAMUEL FRANKLIN FORD

Mathematics

Physics

Track 2, 5, 4; Intramural sports 1, 2, 5, 4; Transfer from Salisbury State Teachers College 5.

Industrious Physicist and Likable Day-Hop; capable trackman; steady and friendly.



MARY MARGARET GARDNER

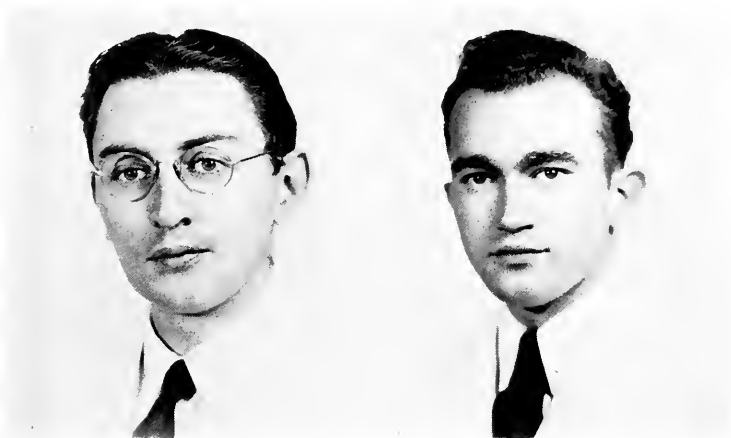
Mathematics

Biology

Hockey 1, 2, 5, 4; Captain 5, 4; Varsity 5, 4; Captain 4; Archery 1, 2, 5, 4; Basketball 2, 5, 4; Board of Managers of Girls' Athletic Association 5, 4; Vice-President 4; Highest number of points in Girls' Athletics 2, 5; Meritorious in Scholarship 2, 5; Biological Society 4.

Diligent Day-Dodger; conscientious and sincere; best all-around athlete and superior student.

WASHINGTON COLLEGE



WALTER ADELBERT GLASS

MILTON F. V. GLOCK

Physics

Mathematics

K Σ

Johns Hopkins University 1, 2; Y. M. C. A. 1, 2; President 2; Cross Country 2; Letter; Rifle Team 1, 2; Letter; R. O. T. C. 1, 2; Private's Medal 1; 5rd Corps Area Rifle Match Medal 1, 2; Track 2; Kappa Sigma 1, 2; Barnstormers 1, 2; Inter-Class debate 2; Athletic Association Board 2; Inter-Fraternity Board 2; Student Activities Council 2; Distinguished Scholarship 3, 4.

Ministerial Physicist with driving energy, ability and a lot of common sense; public speaker par excellence.

Chemistry

Mathematics

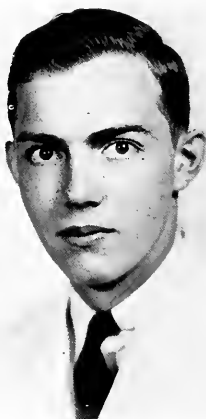
Α Χ Α

Washington Players 1, 2, 3, 4; Stage Manager 2, 3, 4; Mt. Vernon Literary Society 2, 3, 4; Sergeant-at-Arms 3; Phi Sigma Tau 1; Lambda Chi Alpha 1, 2, 3, 4; Y. M. C. A. 1, 2, 3, 4; Paul E. Titsworth Debate Club 2; Glee Club 3, 4; Chem-Physics Society 3, 4; Historical Society 1.

Chronic Questioner; earnest and invincible; enthusiastic chemist and able mechanic.



THE 1940 PEGASUS OF



GEORGE ERETY GRIEB

Economics

Θ X

History

Theta Kappa Nu 1, 2, 5; Phi Sigma Phi 4; Secretary 4; Theta Chi 4; Secretary 4; "Elm" Staff 1, 2, 5, 4; Editorial Board 5, 4; Le Cercle Français 1, 2, 5, 4; French Play 2, 5, 4; Historical Society 1, 2; Intramural Basketball 1, 2; Meritorious in Scholarship 5, 4.

Enthusiastic Equestrian; card shark; commodore of the "Sneak-Box"; country gentleman; ingenious and intelligent.



LOUISA FAITHFUL HALL

History

A X Ω

English

Kappa Gamma 1; Alpha Chi Omega 1, 2, 5, 4; Corresponding Secretary 5; Program Chairman 4; Y. W. C. A. 1, 2; Glee Club 1, 2; Class Hockey Team 1, 2, 5, 4; Varsity Hockey 4; Class Basketball Team 1, 2, 5, 4; Historical Society 2, 5, 4; Women's Athletic Association 1, 2, 5, 4; Le Cercle Français 2, 5.

Amiable Athlete; thoughtful and generous; well-known commuter and attractive Church-hillite.

WASHINGTON COLLEGE



MARGARET ANN HOLLINGSWORTH

DORIS MARION HEBDITCH

Mathematics

English

A X Ω

Kappa Gamma 1; Alpha Chi Omega 1, 2, 3, 4; Treasurer 3, Vice-President 4; Who's Who in American Colleges and Universities 4; Y. W. C. A. 1, 2, 3, 4; Vice-President 3, President 4; Board of Managers of G.I.A.A. 1, 2, 3, 4; Secretary 3, President 4; Women's Student Government Association 4; Merit Scholarship 4; Hockey 1, 2, 3, 4; Honorary Varsity Hockey 3, 4; Basketball 1, 2, 3, 4; Sigma Sigma Omicron 3, 4; Meritorious in Scholarship 1, 3, 4; Distinguished 2.

"Charming Coquette"; delightful conversationalist, athlete, and excellent mathematician; sincere, unaffected and sought-after.

History

French

A O Π

Sigma Tau Delta 1, 2; Alpha Omicron Pi 2, 3, 4; Assistant Treasurer 3, Recording Secretary 4; Historical Society 3; Cercle Français 3; Class Hockey 3, 4; Class Basketball 3, 4; Badminton 4.

Dazzling Blond; vivacious and engaging. Baltimore transient, persevering athlete, "puny punster."



THE 1940 PEGASUS OF



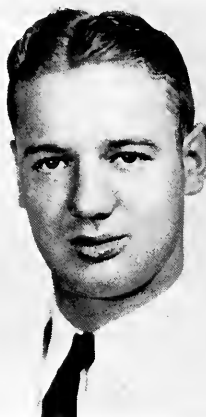
JOHN HENRY EARL HOPPE, JR.

Mathematics

Θ X

Theta Kappa Nu 1, 2, 3; Phi Sigma Phi 4; Theta Chi 4; Football 1, 2, 5, 4; Baseball 1; Intramural Basketball 1, 2, 5, 4; Varsity Club 5, 4; "Elm" Staff 1, 2, 5; Business Manager 5; Dramatic Club 1, 2, 5, 4; Mt. Vernon Literary Society 1, 2; Y. M. C. A. 1, 2.

Confident Pigskin Carrier; a sound mind in a sound body; intelligent and aggressive.



JOSHUA LEWIS HORNER

Economics

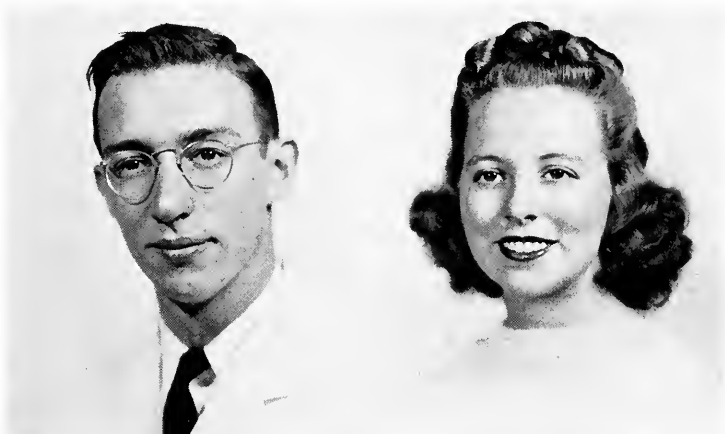
A X A

Lambda Chi Alpha 5, 4; Historical Society 2, 5, 4; Debate Society 2, 5, 4; Mt. Vernon 2; Varsity Club 2, 5, 4; Football 2, 5; Intramural Basketball 2, 5, 4; Intramural Soccer 4; Captain 4; Meritorious Scholarship 4; Y. M. C. A. 1, 2.

Rough and Rustic; athletic; polished equestrian; dry wit; shuffling gait; and infectious smile.

History

WASHINGTON COLLEGE



WILLIAM BENJAMIN JOHNSON

Economics

K A

Government

Kappa Alpha 1, 2, 3, 4; Treasurer 2, 3; President 4; Varsity Tennis 1, 2, 3, 4; Student Council 2, 3, 4; Secretary 3; President 4; Omicron Delta Kappa 3, 4; Treasurer 3; Vice-President 4; Sigma Sigma Omicron 3, 4; "Elm" Staff 3; Mt. Vernon Literary Society 1, 2, 3, 4; Chemistry Club 1; Classical Society 2, 3, 4; Glee Club 1, 2; Treasurer 2; Award 2; Inter-Fraternity Council 4; Paul E. Titsworth Debate Club 3, 4; Who's Who in American Colleges and Universities; Intramural Basketball 1, 2, 3, 4.

"The Jedge"; efficient executive and deliberate public speaker; shrewd politician; the man for the job.

DOROTHY EVELYN JONES

German

A O H

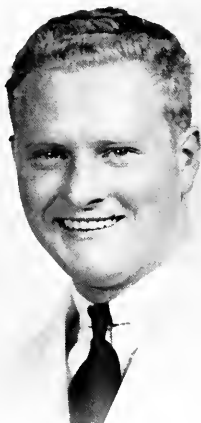
History

Sigma Tau Delta 1, 2; Reporter 2; Alpha Omicron Pi 2, 3, 4; Recording Secretary 3; Vice-President 4; Social Service Delegate 4; Y. W. C. A. 1, 2, 3, 4; Mount Vernon Literary Society 1, 2; Glee Club 1, 2; Class Hockey 1, 2, 3, 4; Archery 1, 2; Library Assistant 2, 3, 4; Library Staff Secretary 3, 4; Biological Society 1.

Blithesome Blond from Baltimore; smooth dancer, competent librarian and delightful friend.



THE 1940 PEGASUS OF



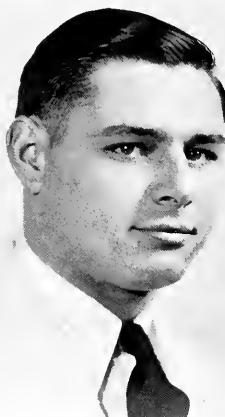
WILLIAM HENRY JONES, JR.

Chemistry

Λ X A

Lambda Chi Alpha 1, 2, 3, 4; Chem-Physics Society 3, 4; Y. M. C. A. 1, 2, 3, 4; "Elm" Staff 1, 2; Intramural Basketball 1, 2, 3, 4; Baseball 1, 2; Football 1, 2, 3; Chemistry Laboratory Assistant 4.

Conscientious Chemist; industrious and capable; intramural sportsman and prospective DuPont man.



WILLIAM LEONARD LEARY

Mathematics

Physics

Rock Hall Transient; diligent mathematician and future surveyor; quiet but constant.

WASHINGTON COLLEGE



HELEN MOORES LOSKAMP

ELIZABETH ANN MAGUIRE

History

A X Ω

Sociology

Alpha Chi Omega 2, 3, 4; Rush Chairman 4; Washington Players 1, 2, 3, 4; Historical Society 2, 4; Hockey 1, 2, 3; Cercle Français 2; "Pegasus" Staff 3; Y. W. C. A. 1, 2.

Sophisticated Bride-to-be; entertaining and vivacious; accomplished actress and delightful conversationalist.

German

A O II

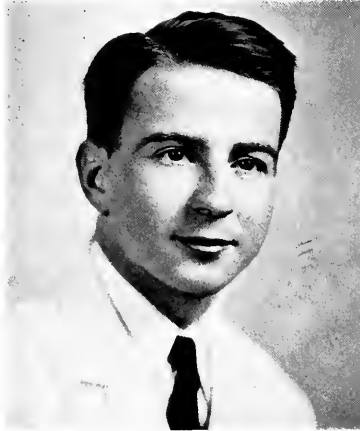
History

Transfer from University of Delaware 2; German Club 1; Y. W. C. A. 1; Sigma Tau Delta 2; Alpha Omicron Pi 3, 4; Historian 3; Corresponding Secretary 4; Historical Society 2, 3, 4.

Jolly Extrovert; infectious laughter and sunny disposition; diligent linguist and untiring pleasure-seeker.



THE 1940 PEGASUS OF



DONALD EMERSON MATTHEWS

Economics

Θ X

Government

Class President 1, 2, 3, 4; Phi Sigma Phi 4;
Theta Chi 4; Cercle Français 1.

Drowsy Class President; intelligent and admired; unofficial executive who gets results; "small but mighty."



SARA ADALIN MAYES

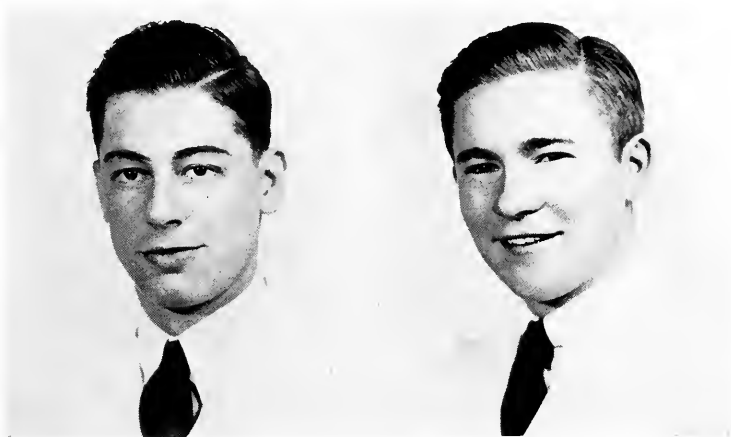
History

French

Transfer from State Teachers College, Towson, Md. 2; Y. W. C. A. 1; Historical Society 2, 3, 4; Cercle Français 4; Y. W. C. A. 2, 3, 4.

Serene Towson Transfer; conscientious student; idealistic and refined. A lover of music.

WASHINGTON COLLEGE



WILLIAM ALFRED McADAMS

EDWARD LEE McCABE

Mathematics

AXA

Phi Sigma Tau 1; Lambda Chi Alpha 1, 2, 3, 4; Correspondent 3; High Gamma 4; Y. M. C. A. 1, 2, 3, 4; Treasurer 3; President 4; Glee Club 1, 2, 3, 4; President 4; Award 2; Sigma Sigma Omicron 3, 4; Editor Handbook 4; Business Manager 3; "Elm" Staff 1, 2; Circulation Manager 2; "Pegasus" Staff 4; Mount Vernon Literary Society 1, 2, 4; Paul E. Titsworth Debate Club 1; Meritorious in Scholarship 1, 2, 3, 4.

"Propitious Physicist"; dignified and self-sufficient; genial humorist, unexcelled student, and valuable leader.

Physics

Chemistry

AXA

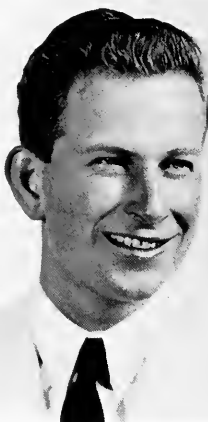
"Pegasus" Staff 1, 2, 3, 4; Assistant Editor 3; Editor 4; Phi Sigma Tau 1; Lambda Chi Alpha 1, 2, 3, 4; Treasurer 3; President 4; Omicron Delta Kappa 3, 4; Y. M. C. A. 1, 2, 3, 4; Cercle Français 3; "Elm" Staff 1; Inter-Fraternity Council 3, 4; Vice-President 4; Baseball 1; Intramural Basketball 1, 2, 3, 4; Chem-Physics Society 4; Student Supervisor N. Y. A. 2, 3, 4; Class Vice-President 1.

Proficient Organizer; independent and straightforward; talented executive, capable leader, and winning personality; jovial and good-natured.

Mathematics



THE 1940 PEGASUS OF



KATHARINE BRIDGES McCARDELL

WILLIAM EDWARD MEDFORD

French

Latin

A X

Alpha Chi Omega 1, 2, 3, 4; Historian 5; Secretary 4; Classical Society 1, 2, 3, 4; Historian 5, 4; Paul E. Titsworth Debate Club 2, 3, 4; Secretary 4; "Elm" Staff 2, 3; News Editor 3; Girls' Athletic Board 3, 4; Hockey 1, 2, 3, 4; Varsity 4; Basketball 1, 2, 3, 4; Tennis 1, 2, 3, 4; Cercle Français 2, 3, 4; Pan-Hellenic Association 5; Washington Players 2, 3; Glee Club 1.

Ever-ready Socialite; smooth dancer; loquacious and entertaining; resolute and discerning.

Chemistry

Physics

Θ X

Theta Kappa Nu 1, 2, 3; Phi Sigma Phi 4; Theta Chi 4; Vice-President 4; Omicron Delta Kappa 3, 4; Chem-Physics Society 2, 3, 4; Vice-President 5; President 4; Football 1; Washington Players 1, 2, 3, 4; Tennis Team 1, 2, 3, 4; Manager 3, 4; Glee Club 1, 2; "Pegasus" Staff 1, 2, 3, 4; Assistant Business Manager 5; Business Manager 4; Senior Class Vice-President.

Adroit Financier; well-groomed and dignified; popular and intelligent leader, able chemist and polished gentleman.

WASHINGTON COLLEGE



CHARLES EDWARD MILLER

Chemistry

K A

Mathematics

Kappa Alpha 1, 2, 3, 4; VIII 2; IV 3; Orchestra 1, 2, 3, 4; Conductor 4; Intramural Basketball 1, 2, 3, 4; Washington Players 1, 2; Orchestra Award 2; Class Football 1, 2.

Melodious Maestro; poised and competent; good-natured chemist and a top-notch trumpeter with personality plus.

MURIEL MARGARET MITTELHOLZER

History

A O II

French

Georgian Court College Transfer 2; Cercle Français 1, 2, 3, 4; Badminton 1; Hockey 1; Mt. Vernon 2, 3, 4; Glee Club 1, 2, 3; Classical Society 3, 4; Y. W. C. A. 2, 3, 4; Vice-President 4; Sigma Tau Delta 2; Alpha Omicron Pi 2, 3, 4.

Persistent Optimist; independent and care-free; debonair socialite and Jersey transfer.



THE 1940 PEGASUS OF

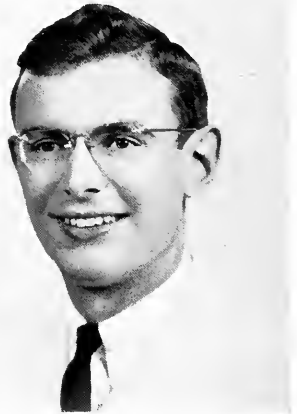


ROBERT ETHERIDGE MOORE

English

Mt. Vernon Literary Society 1, 2, 5, 4; Vice-President 5; President 4; Classical Society 1, 2, 5, 4; Scribus 4; Cercle Français 5, 4; Vice-President 4; Glee Club 1, 2, 5, 4; Orchestra 5, 4; "Elm" Staff 5, 4; Shakespeare Players 1; French Play 2, 5, 4; Sigma Sigma Omicron 5, 4; Distinguished Scholarship 1, 2, 5, 4; Simmons Medal for Highest Average in Freshman Class; Alumni Medal for Highest Average in Sophomore Class; English Assistant 4.

"Southern Gentleman"; a man of refined tastes; devoted classicist, musician and excellent student.



MARK PERKINS MORSE

Physics

Transfer from Salisbury State Teachers College 2; Varsity Basketball 1; Bagleian Society 1; Day Students' Association 1; Y. M. C. A. 2, 5, 4; Intramural Basketball 2, 5, 4; Chem-Physics 5, 4; Paul E. Titsworth Debate Club 5; Track 5; Meritorious Scholarship 2, 5, 4.

Industrious Salisbury Week-ender; hard-working physicist; persevering, dependable and good-natured.

Mathematics

WASHINGTON COLLEGE



GERRY FINLEY NASH

DORSEY COOK NELSON

Biology

Chemistry

Chemistry

Mathematics

A O

Transfer from William and Mary College 2;
Biological Club 1; Varsity Fencing 1; Pledge
Pi Beta Phi 1; Alpha Omicron Pi 2, 3, 4;
Treasurer 3; President 4; Biology Society 3;
Fencing 2, 3.

Ardent Scientist; dependable, poised and re-
fined; a deep thinker, an appreciative indi-
vidual, a sincere friend.

Y. M. C. A. 2, 3, 4; Treasurer 4; Chem-
Physics Society 3, 4; Treasurer 3; Vice-Presi-
dent 4; Sigma Sigma Omicron 3, 4; Intra-
mural Basketball 2, 3, 4; Track Manager 1, 2,
3, 4; Senior Manager 4; Varsity Club 4;
Distinguished in Scholarship 1, 2, 3, 4.

Scientific Scholar and Unassuming Math
Assistant; respected and appreciated; likable;
friendly and helpful.



THE 1940 PEGASUS OF



HOWARD HALE NEUBERT

Mathematics

German

Varsity Football 1, 2, 5, 4; All-Maryland 4;
Varsity Basketball 1, 2, 5, 4; All-Maryland
Second Team 2; First Team 4; Varsity Club
1, 2, 5, 4; Sergeant-at-Arms 5; President 4;
Athletic Association President 4; Dramatic
Club 1, 2, 5, 4; Property Manager 1, 2, 5;
Treasurer 4.

Likeable "Yank"; constant and genuine;
superior athlete, respected leader and a real
heart-breaker.



EDWIN ALLEN ÖHLER

Biology

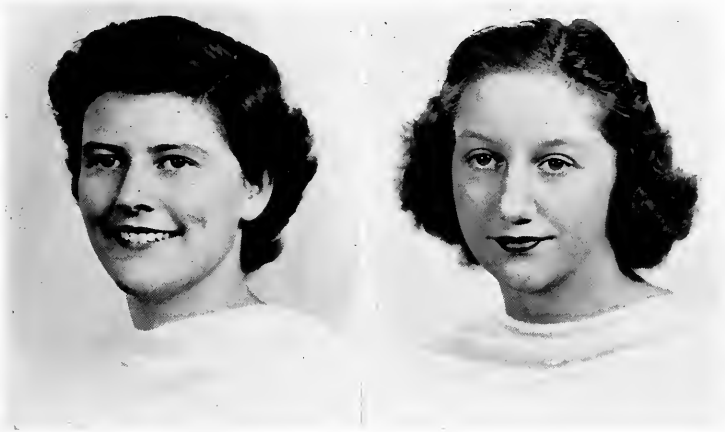
Chemistry

K A

"Elm" Staff 1, 2, 5, 4; Editorial Assistant 2;
Assistant Editor 5; Editor-in-Chief 4; Omicron
Delta Kappa 5, 4; Treasurer 4; Kappa
Alpha 1, 2, 5, 4; Secretary 5; Y. M. C. A.
1, 2, 5, 4; Secretary 5; Vice-President 4;
Inter-Fraternity Council 5; Secretary 5;
Cercle Français 2, 5, 4; Track 1; Intramural
Basketball 1, 2, 5; Meritorious Scholarship
1, 2.

Impulsive Journalist; excellent organizer and
capable anatomist; restive and zealous; a man
of ability.

WASHINGTON COLLEGE



FRANCES SPENCER PERRY

French

Latin

Α Χ Ω

Alpha Chi Omega 1, 2, 3, 4; Treasurer 2; President 3; Sigma Sigma Omicron 3, 4; Treasurer 4; Pan-Hellenic Council 3; President 3; Cercle Français 2, 3, 4; President 4; Classical Society 2, 3, 4; President 4; Mt. Vernon Literary Society 1; "Elm" Sports Editor 4; "Pegasus" Sports Editor 4; Class Hockey 1, 2, 3, 4; Honorary Varsity 3, 4; Basketball 2, 3, 4; Class Treasurer 3, 4; French Assistant 4; Meritorious Scholarship 1, 3, 4; Distinguished Scholarship 2; Dr. Mary T. Burchinal Scholarship 4; Women's Glee Club 1, 4; Board of Managers of Girls' Athletic Association.

Natural Beauty; vivacious and wholesome; ambitious student, capable leader and excellent sport. The essence of versatility.

ELIZABETH MAE POWELL

History

Latin

Classical Society 2, 3, 4; Women's Glee Club 1, 2, 3, 4; Historical Society 2, 3, 4; Hockey 1.

Likable Day Student; friendly and ambitious; ardent classicist and promising teacher.



THE 1940 PEGASUS OF



MARGARET VIRGINIA QUINN

History

English

Meritorious Scholarship 2, 4; Basketball 3, 4;
Historical Society 3, 4; Cercle Français 2.

Pretty Transient; sociable and friendly; good
sport; fine athlete; genuine and sincere.



CLARENCE GARDNER RAWLEY, JR.

Chemistry

Mathematics

Θ X

Theta Chi 4; Phi Sigma Phi 4; Chem-Physics
Society 3, 4; Corresponding Secretary 3;
Chemistry Society 1, 2; Chemistry Labora-
tory Assistant 3, 4; Intramural Sports 1, 2,
3, 4; Y. M. C. A. 1, 3, 4; Track 2; "Elm"
Staff 1.

Carefree Chemist and "Regular Fellow";
friendly, good-natured and easy to know.

WASHINGTON COLLEGE

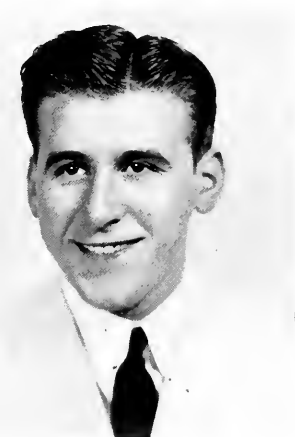


ALEXANDER NOBLE RIEDY

Chemistry

"Chestertown Dilettante"; generous and affable; leisurely chemist and untiring pleasure-seeker.

Biology



NATHAN SCHNAPER

Chemistry

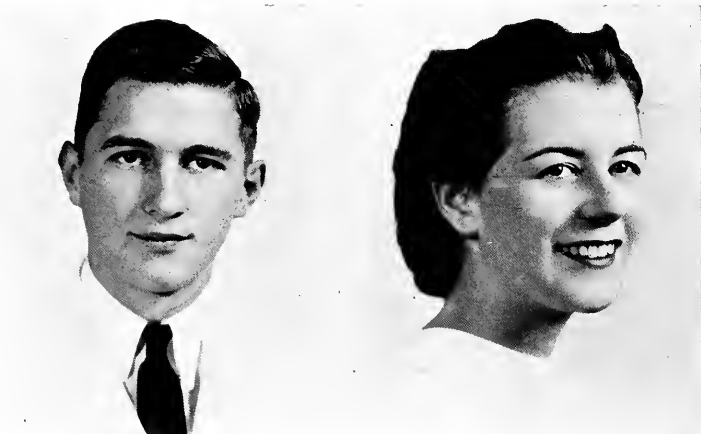
Sigma Sigma Omicron 3, 4; Vice-President 4; Distinguished Scholarship 4; Meritorious Scholarship 1, 2, 3; Chem-Physics Society 3, 4; Secretary 3; Junior Prom Chairman; Intramural Basketball 1, 2, 3, 4; Dramatic Club 3; "Elm" Staff 1.

Mathematics

Spirited Political Boss; glad-hand par excellence; outstanding scholar; carefree and resourceful.



THE 1940 PEGASUS OF



OMAR WILSON SCOTT

History

K A

French

Baseball 1, 2, 3, 4; Intramural Basketball 1, 2, 3, 4; Y. M. C. A. 1; History Club 4; Kappa Alpha 4.

Discreet Gentleman; reserved and unassuming. Alert fly-catcher and intramural cager.

CHARLOTTE BERNHARDT SHAULL

Biology

Chemistry

Z T A

Dramatic Club 1, 2, 3, 4; President 4; Orchestra 1, 2, 3, 4; Zeta Tau Alpha 1, 2, 3, 4; Vice-President 4; Pan-Hellenic 1, 2, 3; Honorary Varsity Hockey 1; Class Hockey 1, 2; Class Basketball 1, 2; "Pegasus" Staff 1, 2, 3, 4; Art Editor 4; Carpenter Biological Society 1, 2; Secretary 2; Y. W. C. A. 1, 2, 3, 4; Girls' Athletic Association Board 1, 2; Women's Student Council 3; Secretary 3; Mt. Vernon Literary Society 4; Women's Glee Club 1; Class Historian 1, 2, 3, 4; Meritorious in Scholarship 1; Biology Laboratory Assistant 3, 4; Tennis 1; "Elm" Art Staff 4.

Energetic Biologist; conscientious and dependable. Artist, musician and actress unsurpassed.

WASHINGTON COLLEGE



JOSHUA EARNEST SHOCKLEY

Economics

Government

Θ X

Omicron Delta Kappa 5, 4; President 4; Student Council 1, 2, 3, 4; Vice-President 4; Theta Kappa Nu 1, 2, 3; Treasurer 3; Phi Sigma Phi 4; Theta Chi 4; Paul E. Titsworth Debate Club 1, 2, 3, 4; Manager 2; Tennis 1, 2, 3, 4; Inter-Fraternity Council 3, 4; Meritorious in Scholarship 1, 2, 4; Who's Who in American Colleges and Universities 4.

Distinct Individualist; cautious and discreet; leisured pre-law student, excellent public speaker and tennis devotee.

HARRIET VIRGINIA SILCOX

English

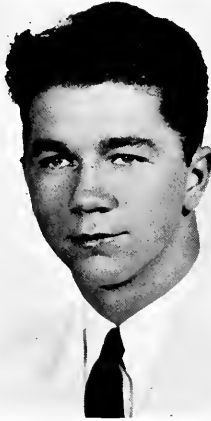
French

Cercle Français 2; Archery 4.

Promising Teacher; self-reliant and industrious; fine student; friendly and reserved.



THE 1940 PEGASUS OF



WILLIAM ARNOLD SMITH

History

Θ X

Sociology

Theta Kappa Nu 1, 2, 3; Theta Chi 4; President 4; Dramatic Club 1, 2, 3, 4; Inter-Fraternity Council 3, 4; President 4; Varsity Club 1, 2, 3, 4; Glee Club 1, 2, 3; Varsity Basketball 1, 2, 3, 4; Varsity Baseball 2, 3, 4; Varsity Football 2, 3, 4; Tennis 3, 4; "Elm" Staff 1, 2, 3; Track 4.

Lanky Baltimorean; genial and refined; rugged athlete, superb dancer and popular extravert.



ELIZABETH MINNESOTA SOMERS

Chemistry

Biology

Transfer from St. Mary's Seminary 2; Varsity Basketball 1; Dramatic Club 1; College Club 1; Tennis 1; Archery 1; Hockey 2, 3, 4; Varsity 4; Basketball 4; Archery 4; Biological Society 4; Meritorious in Scholarship 2, 3; Distinguished 4.

"Plucky" Day-Student; frank and straightforward; superior student and unsurpassed athlete.

WASHINGTON COLLEGE



MARGARET ELIZABETH SPRY

English

A X Ω

Transfer from Blackstone College 3; Mask and Wig Dramatic Club 1, 2; Spanish Club 1; Y. W. C. A. 1, 2; Ten Pens, Honorary English Club 2; Phi Theta Kappa 1, 2; Editor of the "Acorn" 2; Alpha Chi Omega 3, 4; Le Cercle Français 3, 4; Secretary 4; Y. W. C. A. 3, 4; Sigma Sigma Omicron 4; Hockey Varsity 4; "Pegasus" Staff 4.

"Versatile Blues Chaser"; diligent and popular coed with rare accomplishments and personality de luxe.



JOHN RUMBOLD STACK

Chemistry

Θ X

Washington Players 1, 2, 3, 4; President 4; Football 1, 2, 5, 4; Varsity Club 3, 4; Theta Kappa Nu 1, 2, 3; Phi Sigma Phi 4; Theta Chi 4; Glee Club 1, 2, 3.

"Capricious Cavorter"; dance floor idol; enthusiastic athlete, socialite and likable prankster.



THE 1940 PEGASUS OF



WALTER ROWLAND TAYLOR, JR.

Chemistry

K A

Kappa Alpha 1, 2, 3, 4; Sigma Sigma Omicron 3, 4; "Elm" Staff 3, 4; Science Editor 4; Chem-Physics Society 1, 2, 3, 4; President 3; Secretary 4; "Pegasus" Business Staff 2, 3; Orchestra 2, 3, 4; Award 3; Intramural Basketball 1, 2, 3, 4; Baseball 2; Chemistry Assistant 3, 4.

Unpretentious Student and Number 1 Chemist; talented guitarist; quiet and reserved.



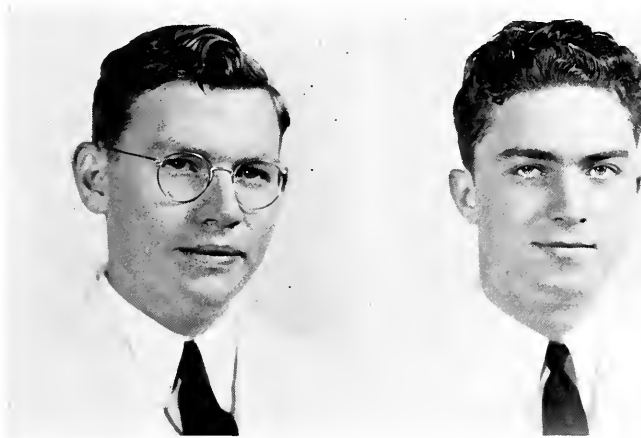
RUTH THOMAS

History

Sociology

Diligent Sociologist; quiet and scholarly; ardent basketball fan; amiable and unaffected.

WASHINGTON COLLEGE



RALPH REES THORNTON

JENNINGS WILLEY TODD

English

German

History

English

Sigma Sigma Omicron 5, 4; President 4; "Elm" Staff 1, 2, 3, 4; Feature Editor 5; Managing Editor 4; Shakespeare Players 1; Mt. Vernon Literary Society 3, 4; Classical Society 4; Historical Society 1, 2, 3; Meritorious in Scholarship 1, 2; Distinguished 4.

A X A

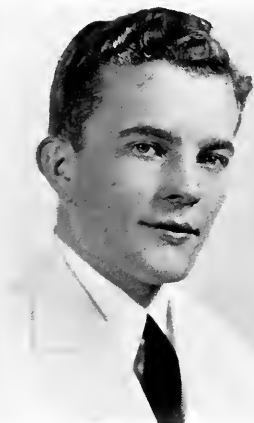
Lambda Chi Alpha 4; Y. M. C. A. 1, 2, 3; Track 1; Intramural Basketball 1, 2, 3, 4; Mt. Vernon Literary Society 1, 2; Intramural Soccer 4.

Easy-Going Duck Hunter and Man-about-town; a rare fellow with a level head.

Red-Headed Savant; lover of the classics; aesthetically intelligent with a distinct sense of humor.



THE 1940 PEGASUS OF



WILLIAM PETER WALATKUS

Mathematics

Α Χ Α

Lambda Chi Alpha 2, 3, 4; High Phi 4; Sigma Sigma Omicron 3, 4; Mt. Vernon Literary Society 2, 3, 4; Treasurer 3; Vice-President 4; Class Vice-President 3; Student Council 4; Sports Editor "Pegasus" 2, 3, 4; Meritorious in Scholarship 1, 2, 3, 4; Y. M. C. A. 1, 2, 3, 4; Chem-Physics Society 3, 4; Junior Varsity Basketball 1, 2; Intramural Basketball 3, 4; Baseball 1.

Maryland Mountaineer, Sportsman and Friend. Intramural flash, conscientious student and a lover of good times.



LAURA EVELYN WHITE

History

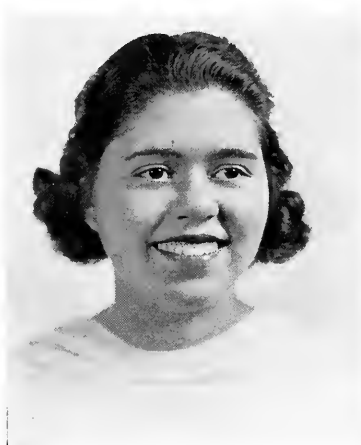
Α Χ Ω

Alpha Chi Omega 2, 3, 4; Historian 4; Girls' Athletic Association 1, 2, 3, 4; Board of Directors 3, 4; Hockey Team 1, 2, 3, 4; Honorable Mention 4; Basketball Team 1, 2, 3, 4; Varsity 3, 4; Captain 3, 4; Historical Society 1, 2, 3, 4; Cercle Français 2, 3, 4; Treasurer 3; Dramatic Club 1, 2, 3, 4; Assistant Property Manager 2; Property Manager 3, 4; Y. W. C. A. 1, 2, 4; Library Assistant 2, 3, 4.

Vivacious Varsity Queen; sophisticated and admired. Superior athlete and efficient librarian.

French

WASHINGTON COLLEGE



MARIE WHITNEY

History

English

Athletic Association 1, 2, 3; "The Tatler" Staff 1, 2, 3; Associate Editor 3; Scribblers-Literary Society 2, 3; Secretary 2; Vice-President 3; Council of Debate 1, 2, 3; Lecture Group 2, 3; French Club 3; Long Distance Club 1, 2, 3; Press Club 1, 2, 3; Publicity 1, 2, 3; Science Club 3.

Nonchalant Northerner; frank and genuine; talkative teacher and irrepressible giggler.



ALICE MAE WILLIAMS

History

English

A X Ω

Alpha Chi Omega 1, 2, 3, 4; Secretary 2; Vice-President 3; President 4; Women's Student Council 1, 2, 3, 4; Vice-President 4; Cercle Français 1, 2; Washington Players 1, 2, 3; Hockey 1, 2, 3, 4; Basketball 1, 2; Pan-Hellenic Council 4; Treasurer 4; "Elm" Staff 4; Y. W. C. A. 1, 2; "Pegasus" Staff 4.

Bewitching Brunette; naive and beguiling; excellent leader and versatile student; poised, graceful and intelligent.

SENIOR CLASS HISTORY

OFFICERS

President.....	Donald Matthews
Vice-President.....	William Medford
Secretary-Treasurer.....	Frances Perry

Four years have passed and we as Seniors draw near to the end of a collegiate career. We are the product, moulded during the course of four years in which we have been subjected to the influences of the college of our choice. Much of great significance has taken place during our sojourn here. In order to appreciate the present, we must look into the past—

“Remember the old hungry bread line huddled along the gymnasium both in the sun and in the rain?” How many times we have told a 1940 Freshman our vicissitudes until their amazement and dismay caused us to wonder if they questioned our credulity.

“Can we forget how we used to penetrate the gloomy dungeon in the basement of Bill Smith Hall, where we diligently perused dusty volumes until the dimly lighted pages became indistinguishable?”

“Remember how the students in the class rooms were almost nauseated by the fumes of pungent chemicals which seeped through the floor of the old chemistry lab?”

We remember only too distinctly and realize with greater appreciation the fullness of our four collegiate years. Unique is the position of our class, for seldom, if ever, will a class witness the erection of three buildings during the lapse of four short years.

The growth of the College is one significant feature which we have watched with pride and

admiration. But we have grown individually as well. Slowly, yes, but steadily. Reflect a moment in self-analysis.

The individuals which entered the portals of the College in the fall of 1956 bear slight resemblance to the mature, more dignified individuals, who have gained the distinction of being called “seniors.” That first year—a year of new thrills, new adjustments. All of the “spoiled child” was not too gently taken out of us by our superior classmates. During our second year our footing became more secure but we still could not be greatly recognized beyond the confines of our little sphere. Soon we were Juniors, filling an important place on the campus. Gradually throughout our remaining years we came to accept greater responsibilities. Now as Seniors we have reached the peak of our college experiences, our interests have developed, our activities have been extended and our “horizons broadened.” Such is the meaning of growth.

Our growth will not end upon graduation but its course in many cases is pre-destined. Those opportunities which we have had in our under-graduate years will prepare us to accept greater responsibilities in later years. Scholarship will always be precious to us. Our college experiences have taught us to love our work and to live a valuable and full life. How more could we have grown?

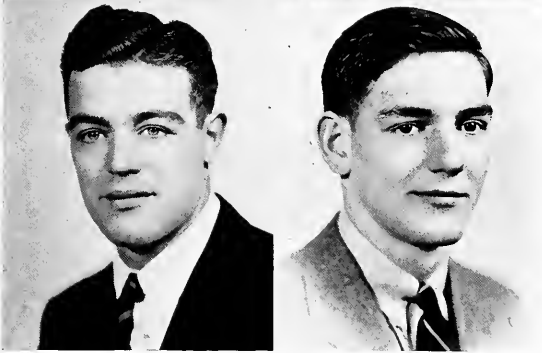
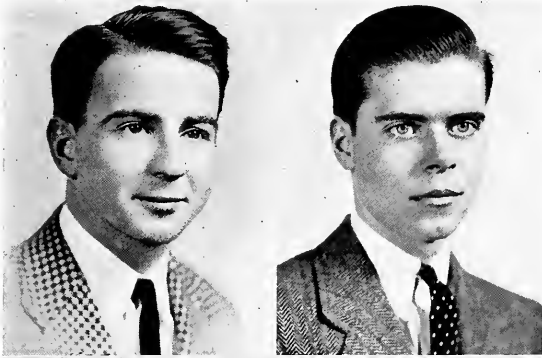
CLASS PRESIDENTS

DONALD E. MATTHEWS

Senior Class President

REED F. HARTNETT

Junior Class President



DAVID BARTOLINI
Sophomore Class President

WILLIAM I. RANK
Freshman Class President

JUNIOR CLASS HISTORY

LEAVES FROM OUR DIARY—CLASS OF '41

September 1937.

Dear Diary,

Entered Washington College today. . . . Freshman week sublime and exciting . . . ended abruptly with chaotic squelching rat party . . . insult added to injury, we just lost the tug-of-war and cane rush . . . just returned from pajama parade. . . . How do some fellows sleep in the loud nighties they wear? Felt real primitive cavorting around bon-fire . . . if only the Sophs had provided hot dogs . . . better news for you today, diary, scoreless tie at Freshman-Sophomore football game salves our wounded pride . . . maybe we're not hopeless . . . marks came out today, diary; it seems that our first real triumph is an unusual number of high indices . . . this together with two of our men, Bremer and Geisler, making letters in football proves



Upper: Rayne, Fetter, Selby, Palmerini, Lovesky, Quillen.

Middle: Messick, Monroe, Wallace, Wescott, Lovis, Strong, Jefferson, Leonard.

Lower: Bexley, Turner, Bremer, Taylor, Bush, de Guzman, Fraser, Kintner, Wharton.

us the ideal class, efficient in athletics and scholarship. Good-by, diary, 'til next year.

September 1938.

Dear Diary,

Came the dawn—it's our Sophomore year—carefree and happy—not being ratted and yet not burdened with too much responsibility . . . isn't it funny, we didn't realize last year how much fun ratting is. . . . They say there's always some pain with joy—we're a select group but we lost some of our popular members. . . . Filled with pride today, diary . . . just won football game 12-0, thanks to Ed Cooper's ball carrying . . . our new member Fetter has become an all-round athlete . . . Bremer still holds his place on the team. . . . More laurels for our class, diary—

JUNIOR CLASS HISTORY

Agnes Zaffere and Nellie Bexley in radio debates. . . . "Little Women" with Anne Turner as Beth discloses our theatrical ability . . . athletes, actresses, debaters, students. . . . We've done right well, haven't we?

September 1940.

Dear Diary,

Somehow we feel suave and sophisticated . . . could it be because we're Juniors? . . . We're somebody this year, diary—Selby, President of Historical Society—Wheatley, chief of Zetas . . . feel sorry for the seniors having to leave, so we are giving them a Prom—hope they enjoy it . . . told you we'd come through this year. . . . Juniors hold 8 coveted positions in Sigma Sigma Omicron and 5 in ODK . . . then there was the inter-class play cup carried off by the Juniors represented by Agnes, Charlotte, Albert and Ed Cooper . . . just to keep up the good work, didn't the



Upper: Hendrickson, Sutton, Baldwin, Spielman, Brady, Cooke.
Middle: Holden, Wheatley, Davis, Steinborn, Phillips, Buckingham, Brown, Leland, Zaffere.
Lower: Cooper, Dulin, Hess, Price, Hartnett, Nock, Clarke, Gallagher, Cooper.

girls' basketball team win a few games . . . if at first you don't succeed . . . are we brilliant . . . end of first semester disclosed four three points . . . opening of new library and science buildings spurs new interest in both arts and sciences for short time . . . many glad they finished Biology before the course got any tougher in the new building, if possible . . . education for some of us seems to hold a bright future—maybe Socrates will get a run for his money as we practice in CHS next year. . . . Spring . . . good resolutions fail . . . indices, the toil of five semesters, hang perilously in the balance because of delightful "campus courting" in the sun . . . and then a mist looms in the distance . . . you guessed it . . . exams . . . enough said. . . . And so, diary, we have come to the close of three years of college . . . we are happy and proud as we look back . . . and the forward view seems to hold many cherished dreams that will be realized in our Senior Year.

SOPHOMORE CLASS HISTORY

President	David Bartolini
Vice-President	Lloyd Davis
Secretary-Treasurer	Frances Kreeger
Council Representatives	Harry Lore, Rufus Johnson

They wouldn't know us now—the upper classmen who greeted us poor suspecting freshmen last year—laughing up their sleeves at our inexperience, yet a little awed at our self-confidence. There were trials and tribulations, yet we plunged gayly through the first year. Then the dawn and we were sophomores—a little more serious, a little less confident. Decisions were to be made. We had begun to take positions of responsibility. Now as an essential part of the school, we have regained



Upper: Koons, Smith, Nagler, Storm, Stevens, Kirwan, Paca, Green, Watson.
Middle: Brooks, Patterson, Larmore, Harris, Guggenheim, Claires, Carter, Pitt, Speicher.
Lower: Bordley, Smith, Starr, Livingston, Johanns, Davis, Stevens, Garrison, Nardi, Smith, Hoopes.

the prestige lost in the "ratting" we received as freshmen. Restrictions made us a little more merciful and the freshmen a little more "cocky," but our retribution came when we won the tug-of-war. (We won't mention the football game.)

We then had to settle down to the business of "rushing," a new experience for sophomores who had been carried away by the thrills of being "rushed," but who had no idea of the anxiety and planning "behind the scenes." We found ourselves in a position where we could help unadjusted freshmen with their problems and gladly did we give advice.

Each year is bound to bring about many changes—new students, new faculty members, new facilities with which to meet our needs. Fortunate indeed, we have been to witness the erection of two new buildings on our campus, the Bunting

SOPHOMORE CLASS HISTORY

Library and the Dunning Science Building. We have had a definite part in the ELM conference, to which we were hosts in the spring, and our activities and interests continue to broaden.

As the school year draws to a close, there comes to our minds the question: What have we given to the school? A galaxy of stars who have excelled in diverse fields.

Midst peanuts and acclaim, Lloyd Davis proved himself an excellent actor in the popular production, "Ten Nights in a Barroom." "You Can't Take It With You" turned out David Bartolini, a blushing matinee idol.

In athletics we produced Peggy Pitt, a high-scoring forward who gained the position of honorable mention on the varsity team.



Upper: Dougherty, Lore, Poughkeepsie, Mead, Clark, Pinto, Dudderar, Johnson.
Middle: Sewell, Logan, Littleton, Diacimakos, Hitch, Stevenson, Kepler, Effland, Russell,
Lower: Kintner, Maguire, Rogliano, Krometis, Blackwood, Bartolini, Kreeger, Wood, Brice, Souder, Petry.

Ray Kirby and Al Dudderar were our football heroes, while Ginny Hoopes and Kitty Newton were varsity hockey stars. Bill Nagler succeeded in winning the ping-pong tournament and is holding a key position on the tennis team.

Music; yes, we hold some claim to fame in this field, too. We can't forget Gus with his drums or Mort with his violin, both of whom have distinguished themselves in the orchestra.

There are many other classmates whose accomplishments are worthy of mention, including Jimmy (I'm from Connecticut) Dougherty, the discus thrower.

Athletes, actors, musicians, leaders-in-the-making—we of the sophomore class take a bow!

FRESHMAN CLASS HISTORY

President	William Rank
Vice-President	James Criss
Secretary-Treasurer	Francis Taylor
Council Representative	Omar Jackson

Listen, my students, and you shall hear
Of the Washington Freshmen from far and near.

And with the suddenness of Paul Revere's ride came our advent to the campus of our historical Alma Mater. During that first Freshman Week we were herded willingly and wide-eyed, hither and yon, and no doubt disturbed the haughty composure of many an early arriving upperclassman with the query, "Are you a Freshman, too?" Despite our goodly number of 121 (it seems we set an all time record for enrollment) we were subdued quite easily, for a time, by the almighty Sopho-



Upper: Beecher, Slade, Arden, Wolz, O'Neil, Boyer, Coram, Steele, Stockbridge, Betts, Mills, Galvin.
Middle: Russell, Robinson, Lyon, Steinman, Rieck, Dockhorn, Ruark, Wood, Strong, Tischer, White, Dickey.
Lower: Carney, Beck, Catlin, Hubbard, Zajic, Dunn, Wieneke, Smith, Robinson, Harris, Taylor, Decker, Brutz, Campbell, Roe.

mores. Few of us shall ever forget that first Sunday night when the town clock tolled an ominous twelve. The girls huddled mournfully in the darkened windows of the Reid Hall third floor to hear the groans and laments of their suffering brother colleagues. The sight of the blindfolded, well-attended line filing past the hall was enough to make many long for the comparative peace and safety of home. And then came the day when we realized that we were really a part of Washington College. We found that after all the Sophomores were Freshmen themselves just a few short months ago. As a result of this new awakening they called us "cocky," "arrogant," and stated in shocked voices that we had over-stepped our bounds. But our existence continued blithely on. We wandered into Gill's and joined heartily in that now famous laugh of Henry's. We discovered that Snuffy could

FRESHMAN CLASS HISTORY

goose-step, and that Cissel could act. We proved our worth in the Freshman-Sophomore football game and tie-up. Regardless of a few broken bones we quite enjoyed the interlude. Our existence was calm and ideal until one night came the long-awaited pajama parade and at last we were enabled to exhibit our colorful polka-dots and stripes before the admiring girls. The egg race was the finale and was not as gruesome as reports would have it . . . besides we like eggs anyway! The arrival of caroling and lighted trees amid the snow impressed us with the beauties of the campus at Christmas-time. There was ice on the river and many of us discovered for the first time that a pair of skates was something to look up at! It was after the holidays that we were confronted most realistically by three-hour examinations and as we spent the majority of the time discovering the vast amount we didn't know, we came to the surprised conclusion that studying in Bull Ses-



Upper: McClellan, Gorman, Jones, Walk, Tomlinson, Aycok, Thawley, Warther, Emmord, Kittrell, Criss, Benjamin, Engel, Nairn.
Middle: Jackson, Coppage, Mooney, Perez, Lewis, Sussman, P. Peters, Fenderson, M. Blackwood, E. Peters, Culver, Brandt, Parris, Galullo.
Lower: Hirsch, Burrell, Murphy, Cissel, Fairchild, Todd, McCauley, Schuerholz, Grine, Bishop, Storey, Meiser, Munyan, V. Cooper, Dukes.

sions didn't bring satisfactory results. Then in a burst of new leaves and not a little eastern shore mist, spring arrived. The strains of "High Above the Chester River" floating softly over the quiet campus in the warm twilight evenings filled us with a new thrilling sense of pride and love, a love for our Alma Mater. As we all look back on this year, we each one of us feel that we have attained a new and deep-founded satisfaction, a satisfaction of knowing that here we have found the place wherein we can begin to fulfill our cherished ideals and plans. Here is the campus, the buildings and the atmosphere that will see us through four years of worthwhile preparation.

Index to Organizations

GOVERNMENTAL

Men's Student Government Association	70
Women's Student Government Association	71
Interfraternity Council	72
Panhellenic Council	73

SOCIAL

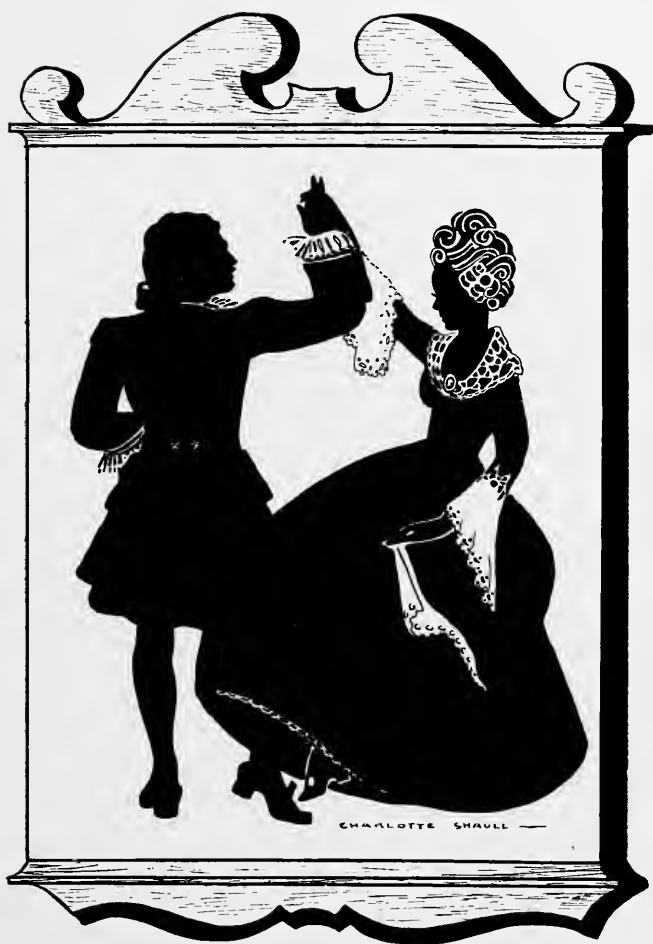
Honor Society	74
Mount Vernon Literary Society	75
Young Men's Christian Association	76
Young Women's Christian Association	77
Men's Glee Club	78
College Concert Orchestra	79
Washington Players	80
Debate Society	81
Classical Society	82
Historical Society	85
Cercle Français	84
Chemistry-Physics Society	85

JOURNALISTIC

Washington College Elm	86
The 1940 Pegasus	88

FRATERNAL

Omicron Delta Kappa	90
Lambda Chi Alpha	92
Theta Chi	94
Kappa Alpha	96
Alpha Chi Omega	98
Alpha Omicron Pi	100
Zeta Tau Alpha	102



ORGANIZATIONS

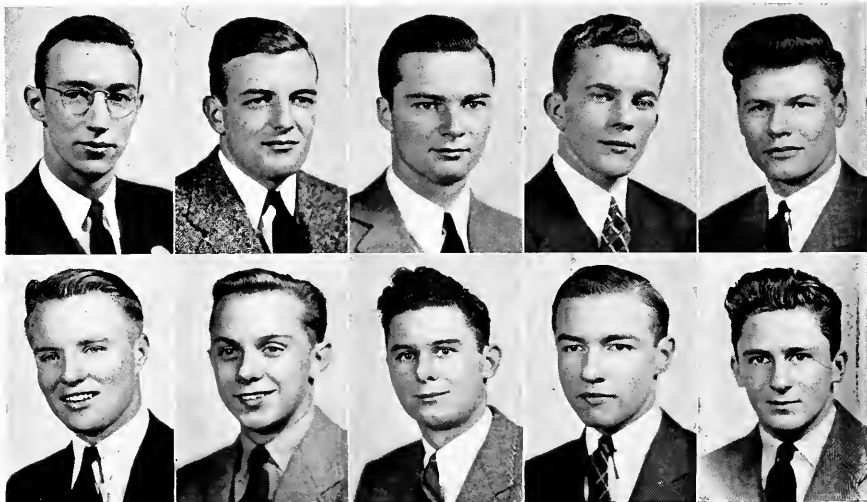
W. Johnson

Shockley

Cooper

Walatkus

Copple



Hess

Lore

Selby

R. Johnson

Jackson

MEN'S STUDENT GOVERNMENT ASSOCIATION

President.....	William B. Johnson
Vice-President.....	J. Earnest Shockley
Secretary.....	Edward Cooper
Faculty Adviser.....	Professor Frank Goodwin

Since the organization of a Student Government Association at Washington College more than a decade ago, those who believed in it and worked for its establishment have seen its executive body, the Washington College Student Council, vastly extend the scope of its activities. Its aims—the perpetuation of healthy college traditions, the promotion of cooperation between the students, faculty and administration, regulation of student conduct, and the fostering of personal responsibility and honor—have always guided the Council in its work.

But Council activities have been sharply divided into two distinct types of work—that concerned with honor and regulation of student conduct and that concerned with student welfare. Council regulation of conduct is so inclusive a field as not to need expansion, but the efficiency and success of each Council is well indicated beyond that field by how far it is responsible to and serves the Student Body.

This year the Council has attempted to practice what is taught in the classrooms. Numerous steps have been taken to make the student government a more democratic procedure. One of the major objectives of the year has been an effort to eliminate graft and profits at the expense of the students and their organizations. Student opinion on these and other points has been crystallized and acted upon by the Council. Council regulations and administrative procedure have been in many instances brought up to date.

Caplan

Williams

Wheatley



Hollingsworth

Monroe

Johanns

WOMEN'S STUDENT GOVERNMENT ASSOCIATION

President.....	Evelyn Caplan
Vice-President	Alice Williams
Secretary-Treasurer	Jean Wheatley
Faculty Adviser.....	Dean Amanda T. Bradley

The Women's Student Government Association has completed another successful year in performing its duties as the official governing body of Reid Hall.

During the year 1939-1940, it has maintained the rules established by previous councils, insofar as these rules have met with the needs of the group; and, in addition, it has made worthwhile innovations of its own. An effective innovation was the establishment, during the second semester, of a Procter System for the Freshmen.

In order to further the desire to study, more library privileges were granted to those Freshmen attaining an index of one point. They were also allowed more privileges of a social nature.

A radio and other things for which a need was felt were acquired through the efforts of the Council. The constitution was revised, and rule books printed. In addition, the usual Christmas program and Girls' Dances were sponsored.

In spite of criticism, the Council has made great progress. It has done its part in promoting a better harmony in Reid Hall and on the campus as a whole.

INTER-FRATERNITY COUNCIL

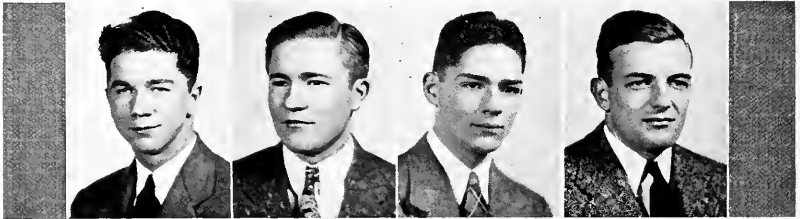
President.....William Smith
 Vice-President.....Edward L. McCabe
 Secretary-Treasurer.....William Buckingham

Smith

McCabe

Buckingham

Shockley



Elliott

Johnson

Hartnett

Spielman

Hess

In continuation of better inter-fraternity relations the Inter-Fraternity Council inaugurated its second year by making various interpretations of the constitution and the by-laws.

Due to the national merger of the Lambda Chi Alpha and the Theta Kappa Nu fraternities, the Washington chapter of the latter returned to the local Phi Sigma Phi. Later in the year this group was installed with the national Theta Chi fraternity.

For the first time in the history of fraternities on the campus, representatives of the three fraternities set the date for silence period. This decision formerly rested with Dean Jones.

One of the outstanding activities of the Council this year was the sponsoring of the Inter-Fraternity Ball. For this occasion the "Men About Town" orchestra was engaged and a successful evening was the result.

PANHELLENIC COUNCIL

President.....Jean Wheatley
SecretaryGerry Nash
Treasurer.....Alice Williams

Wheatley

Nash

Williams



Brooks

Steinborn

Kintner

The object of the Panhellenic Council is to maintain on a high plane of sorority life and inter-sorority relationships, to cooperate with college authorities in their efforts to maintain high social and scholastic standards throughout the whole college, and to be a forum for the discussion of questions of interests to the college sorority world.

Panhellenic was organized on this campus immediately after the last of the three groups became affiliated with national organizations in 1958.

This year the group published a "Panhellenic Pamphlet" which explained the purpose of sororities, the rushing rules, and the important information about each chapter established on the campus.

Panhellenic formally opens the rushing season by sponsoring a tea. During the course of the two weeks' formal rushing period, several open forums are held for the benefit of the freshmen.

The important social function of the year is the Panhellenic Ball which is sponsored by the council every spring.

SIGMA SIGMA OMICRON

PresidentRalph Thornton
 Vice-President.....Nathan Schnaper
 Secretary.....Dr. Frederick G. Livingood
 Treasurer.....Frances Perry



Ralph Thornton

The local scholastic honor society, Sigma Sigma Omicron, was organized for the purpose of recognizing and encouraging scholarship on the Washington College campus. In 1957, the name of the society was changed from the "Honor Society" to Sigma Sigma Omicron; these Greek letters being an abbreviation of the society's motto: "Service through Scholarship for Washington College."

At the past honor recognition day, held annually in assembly shortly after the beginning of the second semester, the organization inducted eight members from the Junior class and one from the Senior class. The candidates elected into the society must have an aggregate index of 2.25 to be eligible. Student membership into the society may at no time exceed twenty.

The society has, this year, adopted an initiation ritual which was used at the formal initiation of new members at the organization's banquet in April.

In keeping with the idea of fostering scholarship, various members of the society were assigned compendiums of fellowships and graduate scholarships, which are available to the student body. Formal and informal discussions have taken place as to the best means of promoting scholarship on the campus. Members have been assigned reports in which they were to make correlations between scholastic ability and business success.



Top: Leonard, Walatkus, Hendrickson, Phillips, Spielman, Taylor, Stradley, Wheatley, Zaffere.

Bottom: Johnson, Nelson, Perry, Thornton, Schnaper, Hollingsworth, Moore.

Not Pictured Here: Spry.

MOUNT VERNON LITERARY SOCIETY



Robert Moore

President.....Robert Moore
 Vice-President.....William Walatkus
 Secretary-Treasurer.....James Spielman
 Refreshment Chairman.....Evelyn Caplan

An atmosphere of informality, and genuine aesthetic enjoyment pervades the monthly meetings of the Mt. Vernon Literary Society and because of this factor, the society prides itself

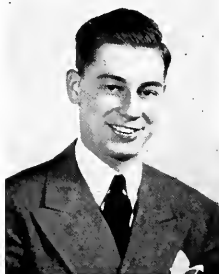
on realizing its greatest aim—that of fostering literary appreciation outside the classroom. Mt. Vernon claims the unique distinction of being the oldest organization on the campus, having been formed in 1847. It was formerly a field for self-expression in elocution and debate, but now a new and vital interest has been manifested in the society. Its theme is literature, both classic and contemporary. The discussions have ranged from Keats to "Omar Khayyam" and "The Sword and the Stone." One meeting was devoted to Oscar Wilde, and Doctor Tolles presented a vivid picture of this creative genius. A personal touch was added by Miss Hermione Riches when she gave at her home an interesting account of her visit to Keats' home at Hampstead Heath. Another evening was turned over to book reviews given by various members of the society. An "Information Please" program proved such a decided hit, that a repeat performance was necessary several months later. The questions covered a variety of subjects, from grand opera and Shakespeare to "Gone with the Wind" and the comic strips. The Mount Vernon, despite its age, is still virile, and adaptable to a new order, and feels that its purpose has been accomplished. It has helped promote a greater interest in literature and things cultural.



Top: Cissel, Thornton, Clark, Nagler, Selby, Garrison, Roe.
 Middle: Wheatley, Dunn, M. Blackwood, Johnson, Lyons, Shaull, S. Blackwood.
 Lower: Mittleholzer, Smith, Spielman, Moore, Walatkus, Caplan, Lewis.
 Not Pictured Above: Campbell, Holdt, McCalley, McAdams, Wood, Fenderson, Kepler.



Top: Roe, Buckingham, Lovesky, Morse, Williams, Harris, Neubert, Koons, Quillen.
 Fifth Row: Dawson, Boyer, Ward, Nagler, Glock, Aycock, Galvin, Parris.
 Fourth Row: Jones, Caldwell, Greene, Jones, Chaires, Smith, Meiser, Cronin, Coppage.
 Third Row: Patterson, Schnaper, Maguire, Eifland, Beecher, Cooper, Davis, Kepler, Cissel.
 Second Row: McCalley, Nelson, Medford, Ohler, McAdams, Wharton, Clark, McCabe, Jones.
 Bottom: Carter, Lore, Hartnett, Rawley, Livingston, Mooney, Steinman, Walatkus.



William McAdams

FIRST SEMESTER

- President.....William McAdams
- Vice-President.....Edwin Ohler
- Secretary.....Albert Wharton
- Treasurer.....Dorsey Nelson
- Sergeant-at-ArmsBasil Clark

SECOND SEMESTER

- President.....Albert Wharton
- Vice-PresidentReed Hartnett
- Secretary.....William Nagler
- Treasurer.....John Harris
- Sergeant-at-ArmsFrancis Mead

One of the outstanding features of the Y. M. C. A. at Washington College is its characteristic non-sectarian, and non-fraternal qualifications for membership.

The Y. M. C. A. has become the prominent service organization "on the hill."

The activities of the "Y" range from the publication of the "Student Handbook" and the sponsoring of tennis and ping pong tournaments, to the purchase of Mother's Day flowers and the recent maintaining of an employment bureau. Freshman week activities, Christmas tree decoration, the annual banquet, and joint socials and discussions with the Y. W. C. A. are among the other things included in the year's program.

At the annual Y assembly this year, senior awards for four years active service were presented to William McAdams, Edwin Ohler, William Cronin, William Jones, William Walatkus, Milton Glock, William Medford, and Edward McCabe.

Y. M. C. A.

President.....Ann Hollingsworth
 Vice-PresidentMuriel Mittleholzer
 Secretary-TreasurerRachele Rogliano



Ann Hollingsworth

The Y. W. C. A. since its establishment on the Washington College campus has served a definite purpose. Its activities began before the opening of the college in the fall with the assignment of "big sisters" to the incoming freshman girls. This custom originated in order to make a tie which might help the

new inexperienced feminine students to "find themselves," and to establish friendly relations from the beginning with their older, more experienced schoolmates.

At Christmas time it has been a custom of the organization to do some kind of altruistic work, this year our project being the distribution of food and dolls among the poor families in the community.

The Y. W. C. A. and the Y. M. C. A. have jointly participated in several endeavors, including Sunday evening vespers, open forums on various current topics and one social event held at the end of the year. Greater interest has been manifested and a spirit of cooperation has resulted between the two organizations.



Top: Loois, Strong, Fenderson, Culver, Blackwood, Nocke, Tischler.
 Third Row: Cooper, Nardi, Dockhorn, E. Peters, P. Peters, Harris, Hubbard.
 Second Row: Burrell, Bishop, Todd, Lewis, Wood, Hirsch, Fairchild.
 Bottom: Shaull, Zaffere, Mittleholzer, Hollingsworth, Rogliano, Petry, Mayes.



Top: Beecher, Lovesky, Hess, Davis, Moore, Glock, Ward, Ruark, Greene, Kepler.
 Middle: Souder, McAdams, Petry, Wheatley, Peters, Peters, Lyons, Cooper, McCalley, Mooney.
 Bottom: Leonard, Patterson, Blackwood, Culver, Blackwood, Strong, White, Dockhorn, Wood, Fairchild, Burrel.

GLEE CLUB

President.....William McAdams Secretary-Treasurer...Edward McCalley
 Manager.....Ogle Hess Librarian.....Jesse Green

Mr. Julian Coleman took over the leadership of the Washington College Glee Club this year and directed it through a very successful year. Under his spirited direction the Girls' Glee Club and the Mixed Chorus were re-organized and a large turnout was the result.

To open the season, the Men's Glee Club presented a feature concert from the stage of the New Lyceum Theater. Following this the combined mixed chorus made several public appearances, including the annual Spring Concert and the commencement musical program.

With very few members graduating this year, the prospects for next year are very bright.



William McAdams

COLLEGE CONCERT ORCHESTRA



Edward Miller

Student Director.....C. Edward Miller
 LibrarianJames S. Spielman
 Manager.....W. Rowland Taylor
 Faculty Director.....Dr. Frederick G. Livingood

FIRST VIOLINS

James S. Spielman
 Mortimer Garrison
 Margaret Kintner
 Martin Warther

SECOND VIOLINS

James Diacumakos
 Ernest Larmore
 Frank Baynard
 Charles Dulin
 Owen Anderson

SAXOPHONES

Betty Lussier
 Leonard Paris
 Austin Murphy

BASSOON

Robert Livingston

TRUMPETS

C. Edward Miller
 Charlotte Shaull
 William Betts

TROMBONES

William Brotemarkle
 Paul Ruark
 Donald McClellan
 Leon Marsh

PIANO

Robert Moore
 Sarah Speicher

BASS HORN

Frank Brady

DRUMS

August Krometis

GUITAR

Rowland Taylor



Back Row: Warther, Kintner, Miller, Covington, Shaull, Betts, Brady, Krometis, McClellan, Marsh, Ruark, Brotemarkle, Dr. Livingood, Baynard.
 Front Row: Spielman, Garrison, Coleman, Moore, Speicher, Dulin, Anderson.

WASHINGTON PLAYERS

President.....Charlotte Shaull	Treasurer.....Howard Neubert
Vice-President.....Albert Wharton	Business Manager.....Henry Maguire
Secretary.....Irma Taylor	Stage Manager.....Milton Glock
Property Manager.....Evelyn White	



Charlotte Shaull

It is with a feeling of satisfaction that the Washington Players look back upon their year's work. Few have been those who have participated in the year's productions, but tireless have been their efforts.

The curtain goes up on the club's first performance—"Ten Nights in a Bar Room," a first class melodrama. Amid roaring laughter, fast-flying peanuts and riotous applause the "Can-Can" chorus presented a spectacular performance between acts. The club's first attempt at such a production deserved commendation.

A lapse of time—routine activities of the organization proceeded smoothly—the second play of the year was chosen—"You Can't Take it with You." With excellent advertising, a popular play, and a well-chosen cast, the second production of the year surpassed any recent performance, judging by the size of the audience and their response.

The Spring season brought about the usual inter-class play tussle and the French play. The title for the inter-class competition was won by the Junior class.

A new unit, "Pimocchio," was devised by the club and given for the benefit of the Child Welfare Association of Kent County.

The June play, "The Ghost Goes West," winds up a very pleasant and successful season.



Top: Cissel, Dawson, Taylor, Glock, Kittrell, Arden, Patterson.
 Third Row: Rogliano, Nairn, Parris, Maguire, Davis, Lovesky, Soh.
 Second Row: Petry, Lyons, Hirsh, P. Peters, Lewis, E. Peters, Tischer, Cooper.
 Bottom: Wharton, Steele, Hubbard, Shaull, Neubert, Schnaper, White.

PAUL E. TITSWORTH DEBATE CLUB

President.....Agnes E. Zaffere Manager.....Rufus C. Johnson
 Faculty Adviser.....Winton Tolles



Agnes Zaffere

Students, whether polished debaters or stammering speakers, are afforded an opportunity to participate in forensic activity through the Paul E. Titsworth Debate Club.

Every year a series of freshman debates are held, in order for the new members to compete against debaters in their own class, thereby increasing their ability and their confidence.

The complete schedule includes approximately thirty-five inter-collegiate contests. This year's program afforded William Johnson and Earnest Shockley an opportunity to explore the World's Fair, while they were on a trip during which they successfully encountered New York University, Columbia University, and Hofstra College. Jim Diacumakoes and Rufus Johnson invaded the Southland and enjoyably encountered William and Mary College, University of Richmond and Hampden-Sydney. Numerous other trips were taken, which carried various teams into Washington, Baltimore, and Salisbury. At home our teams encountered representatives of colleges and universities from ten states.

This year through the cooperation of Dr. Livingood, a Speakers' Bureau was formed and put into operation. The Bureau received requests from numerous churches and organizations for forensic entertainment of varying types.

One of the most successful seasons of the Paul E. Titsworth Debate Club was terminated for all the active members of the society by a banquet given by the coach and faculty adviser, Dr. Winton Tolles.



Top: Wharton, Steinman, Johnson, Aycock, Roe, Cissel.
 Bottom: Decker, Patterson, Zaffere, McCardell, Souder.
 Not Pictured Above: R. Johnson, Shockley.



Top: Cooke, Garrison, Tomlinson, Thornton, Johnson, Prof. Solandt.
 Middle: Zaffere, Hoopes, Crew, Pitt, Powell, Undy, Patterson, Jefferson.
 Bottom: Nittleholzer, Nocke, Caplan, Perry, Moore, McCardell, Steele.
 Not Pictured Above: Leonard, Tischer, Starr, McCalley, Holdt.

CLASSICAL SOCIETY

Praeses.....	Frances Perry	Quaestor Aeriarius.....	Evelyn Caplan
Scribus.....	Robert Moore	Scriptor Rerum.....	Katharine McCardell

SOCI HONORIS CAUSA

Dr. Gilbert W. Mead	Dr. Gertrude V. Ingalls
Miss Amanda T. Bradley	Miss Florence T. Snodgrass
Dr. Esther M. Dole	Mrs. Clara S. Solandt
Dr. Carleton Andrews	



Frances Perry

The Classical Society, sponsored by Professor Solandt, was organized in 1935 for Latin students and others interested in the classics. Its purpose is to foster these interests on an enjoyable level. Meetings in which students and faculty members participate are held monthly. This year the society has been fortunate in having as speakers: Dr. Winton Tolles, Dr. Carleton Andrews, Miss Amanda Bradley, Dr. Gertrude Ingalls, and Professor Solandt. The musical programs have been very efficiently prepared by Robert Moore. Many students as well as guest artists have participated. Refreshments, planned by Evelyn Caplan, were served during the informal discussions following the meetings.

In addition to the regular monthly meetings, the Classical Society sponsored a picnic and a banquet served in good old Roman style.



*Top: Smith, Hendrickson, Buckingham, Aycock, Quillen, Cooper.
 Fourth Row: McCalley, Maguire, Gorman, Benjamin, Bartolini, Boyer, Scott, Dawson.
 Third Row: Rieck, Cissel, Steinman, Copple, Sussman, Wallace, Kepler, Anderson, Clark.
 Second Row: Bishop, Messick, Quinn, Powell, Mayes, Brown, Hirsh, Jefferson, Crew, White.
 Bottom: Todd, Bexley, Schnaper, Burrel, Selby, Mittleholzer, Horner, Caplan, Fairchild.*



John Selby

HISTORICAL SOCIETY

Honorary President.....Dr. Esther M. Dole	SecretaryEvelyn Caplan
PresidentJohn W. Selby	TreasurerOwen Anderson, Jr.
Vice-President.....Jervis Cook	PublicityCalvert Jones, Jr.

The Washington College Historical Society is a branch of the Kent County Historical Society. Its members are students who are interested in all phases of History and especially in the early history and background of Washington College and Kent County.

The Society has taken as its duty to Washington College research concerning the early history of the school. Rare and old documents, uncovered and preserved by the Society, have completed many of the unfinished pages of the college's history.

Throughout the year, the Society held many "Document Teas," at which much of the work was accomplished. During these meetings, the members combed through numerous documents which, donated by interested friends, pertained to the early history of the college. Many of these dated back to the eighteenth century. These documents were examined and classified and are preserved for future reference.

In addition to "Document Teas," the Society obtained guest speakers who lectured on interesting phases of current history.

LE CERCLE FRANCAIS

President.....Frances Perry Secretary.....Peggy Spry
 Vice-President.....Robert Moore Treasurer.....Minor Steel
 Sergeant-at-Arms.....James Bush

Since its organization in 1935 on the Washington College campus, Le Cercle Français has become increasingly important, this year reaching its present state of forty active members. Under the guidance of Dr. Laurance Ford, great strides have been made in the society in the promotion of the study of French life and culture.

The meetings of the Cercle have been conducted in French with all the members participating in order to bring about a better understanding of the spoken language.

Their aims have been further promoted by means of French songs, operas, lectures, and oral quizzes, which are a part of the monthly meetings.

As a major project the club presents a French play during the second semester in conjunction with the Dramatic Club. This play is cast and directed by members of the society. Much pleasure, a small financial gain, and an increased command of the French language are the by-products of such an undertaking.



Frances Perry



Top: Ohler, Dawson, Dr. Ford, Bartolini, Copple.
 Third Row: Blackwood, Loovis, Mead, Hoopes, Dulin, McCardell.
 Second Row: Caplan, Sewell, Monroe, Nocke, Brown, Mittleholzer, Wheatley, Mays.
 Bottom: Zaffere, Kintner, Spry, Perry, Moore, Steele, Taylor.

CHEMISTRY-PHYSICS SOCIETY



William Medford

President.....William Medford Treasurer.....William Nagler
Vice-President.....Dorsey C. Nelson Sergeant-at-Arms.....Edmond Lovesky

The Chemistry-Physics Society, composed of Chemistry and Physics students interested in fostering science on an intellectual level, was organized in 1938 to supplant the inactive Chemistry Society. To broaden its scope of science, the organization voted at a recent meeting to extend its membership to Biology students, and to change its name to the Society of Sciences.

During the year, the society presented a number of guest speakers, who are authorities in their respective fields and who addressed the organization at its monthly meetings. In addition to this, motion pictures, demonstrations, and other interesting programs were arranged.

At the annual commencement this year, the Society will present an award to the member of the graduating class who has obtained the highest honors in Chemistry while in college. Beginning with next year, this award will be made to include all of the sciences.



Top: Livingston, McNiff, Bartolini, Neubert, Jones, Cronin.
Third Row: Cooper, Carter, Maguire, Glock, Rawley, Diacumakos, Kardash.
Second Row: McCalley, Buckingham, Efland, Smith, Walatkus, Morse, Jones, Gorman.
Bottom: Schnaper, Lovesky, Nagler, Medford, Nelson, Taylor, McCabe.

WASHINGTON COLLEGE ELM

Published weekly, from September 24 to May 27, by and for the interests of the student body, faculty and alumni of Washington College, the eleventh oldest institution of higher learning in the United States. Founded at Chestertown, Maryland, 1782.

EDITORIAL STAFF

Editor-in-Chief.....Edwin Allen Ohler
 Managing Editor.....Ralph R. Thornton
 Editorial Board.....Alice Williams, Ernest Shockley,
 George Grieb, James Spielman
 News Editor.....Evelyn Caplan
 Editorial Assistant.....Agnes Zaffere
 Assistant Editors.....Reed Hartnett, James Spielman

Associate Editors

Sports.....Mike Kardash
 Exchanges.....Agnes Zaffere
 Music.....Robert Moore
 Science.....Rowland Taylor, Gerry Nash
 Features.....J. Calvert Jones
 Society.....Regina Loovis
 Girls' Sports.....Frances Perry
 Staff Secretaries.....Marian Decker, Dian Hubbard

Business Staff

Business Manager.....David Clarke
 Assistant Business Manager.....Joseph Palmerini
 Advertising Manager.....Rufus Johnson
 Circulation Manager.....Robert Livingston

Reporters

Molly Blackwood, Edward Boyer, William Cissel, Virginia Cooper, Samuel Davis, Robert Dempsey, John Effland, Ralph Emmord, Harry Hendrickson, Robert Hill, Leslie Lewis, Donald McClelland, Leonard Parris, Ellen Peters, Phyllis Peters, William Roe, Lanny Russell, Naomi Russell, Nelson Sobl, Minor Steele.

Moving from a monthly publication through several form changes, the Washington "Elm" entered into this, its fortieth year of existence. In June 1899, a monthly magazine form served as the beginning of the present "Elm." It was not until 1925 that it was changed to a bi-weekly with a newspaper format. It was called

the Washington Collegian. Five years later, the name Washington "Elm" was given to the publication by the student body, and in September 1954 it assumed its present form and frequency. Since then changes have occurred mainly in policy and physical make-up.

Streamlining has recently changed the appearance of the front page to make for a more attractive layout. Returning to its form of several years ago, the mast head and editorials are now run in double columns.

In order to coordinate the ten associate editors, the Managing Editor was appointed and has served very well his intended purpose. Persons skilled in the various departmental fields were selected to handle all news emanating from these fields.

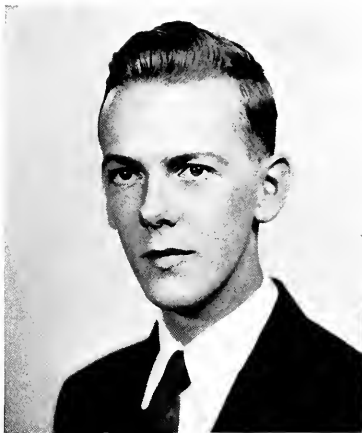
Featured in the "Elm" this year have been guest editorials by prominent persons in the fields of journalism, education, and politics. Campus polls have also created interest among the student body and furnished data indicative of trends at this college. The so-called "dirt" column was abolished because it was considered to be ill-suited to a collegiate publication. In this latter step, the "Elm" has followed the general trend prevalent in collegiate journalism.

"Elm" readers will have noticed the presence of more pictures accompanying news articles. This service was made available through the cooperation of the Chestertown "Transcript."

The year 1959-40 can be modestly termed as a very successful year for the "Elm" as evidenced by its progressive steps.

For the first time in the history of the paper, the "Elm" received first class honor rating from Associated Collegiate Press.

The Washington College Editors' Conference held in April at Washington College and sponsored by the "Elm" was a decided success. It is expected that the conference will become an annual event with the staff of Western Maryland's "Gold Bug" being the hosts next year.



EDWIN OHLER
Editor



DAVID CLARKE
Business Manager



Top: Efland, Parris, Moore, Aycock, Dempsey, Hendrickson.

Third Row: P. Peters, Cissel, Hill, Roe, Sohl, Cooper.

Second Row: Hubbard, L. Russel, Lewis, Blackwood, Steele, E. Peters, Loovis, N. Russel.

Bottom: Wheatley, Perry, Spielman, Thornton, Ohler, Clarke, Hartnett, Caplan, Jones.

THE 1940 PEGASUS



EDWARD McCABE
Editor

WILLIAM E. MEDFORD
Business Manager



The "1940 Pegasus" is the sixteenth volume of the Washington College annual to be published and marks a definite step forward. This year, the "Pegasus" was given an office in the basement of the new library and here the staff have spent much of their time working on the book.

The Editor and Business Manager wish to express their appreciation of the help and cooperation given by Dr. Gilbert W. Mead, Mr. James W. Johns, Miss Mattie R. Whitaker, the faculty, the staff members, printers, engravers, photographers, and the student body.

EDITORIAL

Editor-in-Chief.....Edward L. McCabe
Assistant Editor.....Ogle W. Hess
Copy Editors.....Margaret Spry, William McAdams
Art Editors.....Charlotte Shaull, William Cronin
Photography Editors.....Dian Hubbard, Basil Clark
Typist.....Harry Hendrickson

BUSINESS STAFF

Business Manager.....William Medford
Assistant Business Manager.....Reed F. Hartnett

SECTION EDITORS

Senior Writings.....Dorothy Jones, Alice Williams
Senior Class History.....Charlotte Shaull
Junior Class History.....Jean Wheatley
Sophomore Class History.....Minor Steele
Freshman Class History.....Mary Dunn
Girls' Sports.....Frances Perry
Boys' Sports.....William Walatkus
Assistant Sports Editor.....Donald Smith



Standing: Clark, Wheatley, Hubbard, Walatkus, Perry, McAdams, Hendrickson, Mead, Loovis, Cissel.
Seated: Spry, Medford, McCabe, Shaull, Hess.

OMICRON DELTA KAPPA



PresidentJ. Earnest Shockley
Vice-PresidentWilliam B. Johnson
SecretaryDr. Fred G. Livingood
TreasurerEdwin A. Ohler

FRATERS IN FACULTATE

Dr. Gilbert W. Mead Dr. J. S. William Jones
Dr. Frederick G. Livingood Mr. J. Thomas Kibler

FRATERS IN COLLEGIO

1940

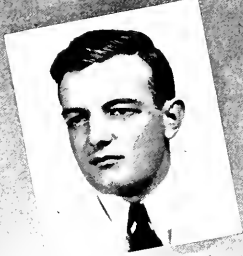
Addis J. Copple William E. Medford
William B. Johnson Edwin A. Ohler
Edward L. McCabe J. Earnest Shockley

1941

Edward W. Cooper Ogle W. Hess
James S. Spielman

ALPHA PSI CIRCLE

Founded at Washington and Lee, 1914
Established at Washington College, 1957
National President, Dr. Wilbur H. Norcross



ΟΔΚ





ΛΧΑ

THETA CHI



<i>President</i>	William Smith
<i>Vice-President</i>	William E. Medford
<i>Secretary</i>	George E. Grieb
<i>Treasurer</i>	Edward W. Cooper
<i>Marshall</i>	F. Reed Hartnett
<i>1st Guard</i>	David Clarke
<i>2nd Guard</i>	Harry E. Lore
<i>Chaplain</i>	Donald Matthews

FRATER IN FACULTATE

Mr. Frank Goodwin

FRATERS IN COLLEGIO

1940

Edward Buck	Harry Hoppe
Cohn L. Collins	Donald Matthews
Edward P. Davis	William E. Medford
Alton Dryden	Clarence Rawley
Robert Everett	J. Earnest Shockley
George E. Grieb	William Smith

1941

Joseph Bremer	David Clarke
James Bush	Edward Cooper

Reed Hartnett

1942

Lloyd Davis	Harry Lore
James Diacumakos	Francis Mead

Nelson Sohl

1945

Thomas Galvin	Walter McCauley
Robert Hitch	Albert Mooney
Nelson Kaylor	Paul Ruark

PLEDGES

James Cris	Robert Munyon
Gene Messick	William Roe

James Steele

BETA ETA CHAPTER

Founded at Norwich University, 1856

Established at Washington College, 1940



OX

KAPPA ALPHA



I	William B. Johnson
II	Charles E. Fetter
III	Robert Lee Clark
IV	John W. Selby
V	Robert H. Quillen
VI	James S. Spielman
VII	William J. Collins
VIII	Lawrence E. McCalley
IX	William A. Buckingham

FRATERS IN FACULTATE

Dr. J. S. William Jones	Mr. J. Thomas Kibler
Mr. Frederick Dumschott	

FRATERS IN COLLEGIO

1940

Robert Lee Clark	William B. Johnson
William J. Collins	Edward A. Miller
Addis J. Copple	Edwin A. Ohler
Rowland Taylor	

1941

William A. Buckingham	Robert H. Quillen
Charles E. Fetter	Harold J. Rayne
Michael B. Kardash	John W. Selby
Lawrence E. McCalley	James S. Spielman

1942

Rufus C. Johnson	Rayfield A. Kirby
------------------	-------------------

PLEDGES

David Bartolini	Omar Jackson
William Benjamin	J. Leonard Parris
Edwin Boyer	George Pinto
Walter Brandt	William M. J. Rank, Jr.
William Chairs	F. Spencer Robinson
Thomas Chittum	Omar Scott
Albert Dudderar	Wilson Schuerholz

Phillip Souder

BETA OMEGA CHAPTER

Founded at Washington and Lee, 1865

Established at Washington College, 1956

Knight Commander: Emmett Lee Irwin



KA

ALPHA CHI OMEGA



<i>President</i>	Alice Williams
<i>Vice-President</i>	Ann Hollingsworth
<i>Treasurer</i>	Agnes Zaffere
<i>Recording Secretary</i>	Katherine McCardell
<i>Corresponding Secretary</i>	Ann Turner
<i>Alumnae Adviser</i>	Mrs. G. W. Mead

SORORE IN FACULTATE

Miss Florence T. Snodgrass

HOSTESSES

Mrs. Maurice Barroll	Mrs. Thomas Kibler
Mrs. Julian D. Corrington	Mrs. Gilbert W. Mead
Mrs. Frederick W. Dumschott	Mrs. Frank Perkins
Mrs. Frank Goodwin	Mrs. Winton Tolles

SORORES IN COLLEGIO

1940

Louisa Faithful Hall	Frances Spencer Perry
Margaret Ann Hollingsworth	Margaret Elizabeth Spry
Helen Moores LosKamp	Laura Evelyn White
Katherine Bridges McCardell	Alice Mae Williams

1941

Margaret Priscilla Brown	Virginia White Nock
Shirley Faith de Cuzman	Irma Mae Frances Taylor
Josephine Gallagher	Margaret Ann Turner
Margaret Esther Kintner	Agnes Elivira Zaffere

Mary Jane Monroe

1942

Sarah Douglas Blackwood	Mary Elizabeth Humphreys
Ellen Cochelle Bordley	Frances Elizabeth Kreeger
Sarah Isabelle Speicher	

1943

Elizabeth Beck	Marion Decker
Mary Blackwood	Dian Hubbard
Helen Marie Culver	Leslie Lewis

PLEDGE

Francis Ann Harris

BETA PI CHAPTER

Founded at De Pauw University, 1885

Established at Washington College, 1957

National President: Mrs. William G. Donald



ΑΧΩ



ALPHA OMICRON PI



<i>President</i>Gerry Nash
<i>Vice-President</i>Dorothy Jones
<i>Treasurer</i>Charlotte Steinborn
<i>Recording Secretary</i>Doris Hebditch
<i>Corresponding Secretary</i>Elizabeth Maguire

SORORES IN FACULTATE

Mrs. J. S. Jones	Margaret Thornton
------------------	-------------------

HOSTESSES

Mrs. Jesse J. Coop	Mrs. J. S. William Jones
Mrs. Howard Dana	Mrs. Elias Nuttle
Mrs. Harry L. Dodd	Mrs. Louise Russell
Mrs. E. Bonwill Dukes	Mrs. Donald Stam
Mrs. Lawrence Ford	Mrs. Charles Wheatley

SORORES IN COLLEGIO

1940	
Doris Hebditch	Elizabeth Maguire
Dorothy Jones	Muriel Mittelholzer
Gerry Nash	
1941	
Nellie Bexley	Mildred Price
Rosemary Brown	Charlotte Steinborn
Jean Leland	Helen Wescott
1942	
Virginia Hoopes	Minor Steele
1945	
Margaret Ann Dukes	Eleanor White

PLEDGES

Betty Dockhorn	Helen Strong
Eleanor Rieck	Norma Jean Wood
Claire Robinson	

SIGMA TAU CHAPTER

Founded at Barnard College, 1897

Established at Washington College, 1938

National President: Helen Haller



AOII



ZETA TAU ALPHA



<i>President</i>	Jean Wheatley
<i>Vice-President</i>	Charlotte Shaull
<i>Secretary</i>	Mildred Brooks
<i>Treasurer</i>	Dorothy Leonard

SORORES IN FACULTATE

Dr. Esther M. Dole	Dr. Gertrude Ingalls
--------------------	----------------------

HOSTESSES

Mrs. Hiram S. Brown	Mrs. W. A. McGregor
Mrs. Arthur L. Davis	Miss Anne B. Smith
Mrs. Frank Madison Dick	Miss Marcie Raskob
Mrs. Preston P. Heck	Mrs. J. B. Whitworth

SORORES IN COLLEGIO

1940

Charlotte Shaull

1941

Dorothy Leonard	Jean Wheatley	Charlotte Russell
-----------------	---------------	-------------------

1942

Mildred Brooks	Mary Landon Russell
Alice Johanns	Marjorie Undy

1945

Virginia Cooper	Ellen Peters
Ann Fenderson	Phyllis Peters

PLEDGES

Betty Lussier	Naomi Russell
Jane Lyon	Jane Tischer

GAMMA BETA CHAPTER

Founded at Virginia State Normal School, 1898

Established at Washington College, 1958

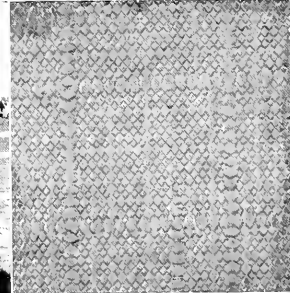
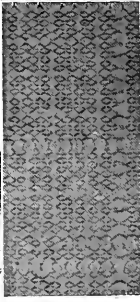
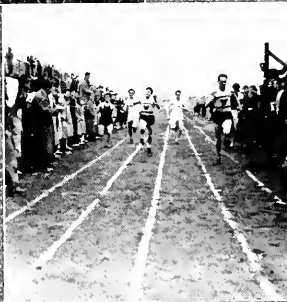
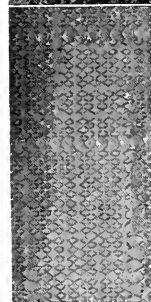
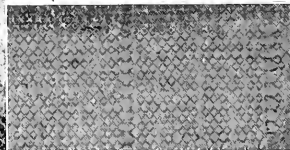
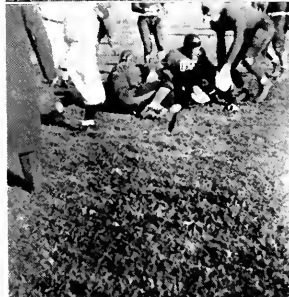
National President: Harold Hill Helper



ZTA



IN ACTION





ATHLETICS

VARSITY CLUB

PresidentHoward Neubert
Vice-PresidentJohn Collins
TreasurerAuvan Smith
SecretaryMichael Kardash



Howard Neubert

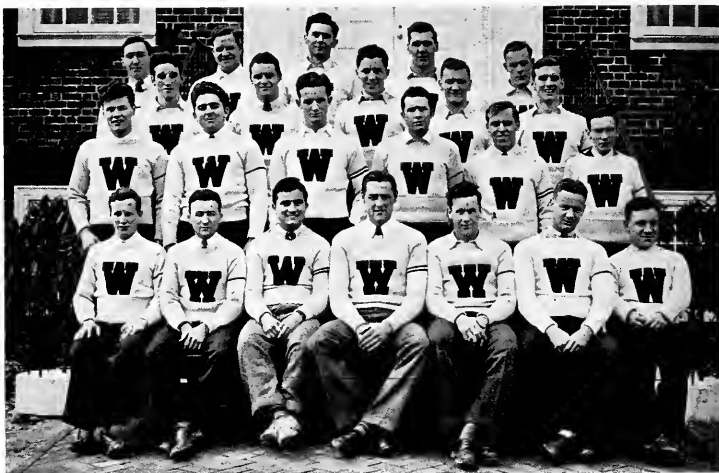
MEMBERS

1940

Edward Buck
 Walter Claggett
 John Collins
 William Collins
 Addis Cople

Joe Sire Elliott
 Robert Everett
 William Ford
 Harry Hoppe
 Joshua Horner
 Michael Kardash

Henry Morton
 Dorsey Nelson
 Howard Neubert
 Auvan Smith
 William Smith



Top: Nelson, Fetter, Selby, Storm, Buck.
Third Row: McNiff, Stevens, Hoppe, Rayne, Dudderar.
Second Row: Cople, Everett, Pinto, Morton, Bremer, Ford.
Bottom: McCalley, Smith, Kardash, Neubert, Collins, Horner, Claggett.

1941

Joseph Bremer
 Charles Fetter

Edward McCauley

Harold Rayne
 John Selby

1942

Albert Dudderer
 Rayfield Kirby

Francis McNiff
 George Pinto

James Stevens
 Marlin Storm



J. Thomas Kibler
Athletic Director
Head Coach of Baseball
Assistant Coach of Football



George L. Ekaitis
Head Coach of Football
Head Coach of Track

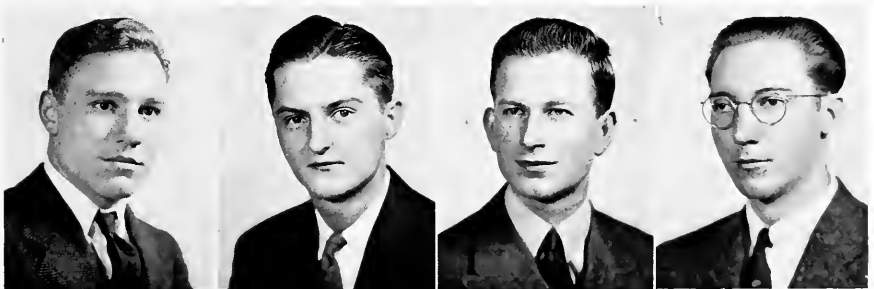


Frederick W. Dumschott
Graduate Manager of Athletics
Head Coach of Basketball

THE ATHLETIC DEPARTMENT



Dr. Winton Tolles
Head Coach of Tennis



Claggett
Football

Elliott
Basketball

Medford
Tennis

Nelson
Track



Watson



Fetter



Miles



Jackson



Benjamin



Mills

FOOTBALL SEASON OF 1939 - 40

SEASON'S RECORD

Washington.....	12	Swarthmore	15
Washington.....	15	Hopkins	0
Washington.....	20	Blue Ridge	0
Washington.....	15	Juniata	0
Washington.....	7	Dickinson	15
Washington.....	0	Mt. St. Mary.....	26
Washington.....	0	Delaware	21



Top: Coach Ekaites, Carter, Jones, Warther, Jackson, Mills, Bartolini, Schuerholz, Robertson.
 Third Row: Criss, Slade, Benjamin, Brandt, Miles, C. Smith, McCauley, Brutz, Galulo.
 Second Row: Messick, Reidy, Fetter, Pinto, I. Smith, Watson, Kirby, Storm, Galvin.
 Bottom: J. Collins, Palmerini, W. Collins, Stack, Neubert, Hoppe, W. Smith, Rayne, Dudderar.



Kirby



W. Collins



J. Collins



Dudderar



Stack



Storm

The Maroons were weakened with the loss of seven members from the squad, five of them being regulars. But under the capable guidance of Coach Ekaitis, several potential freshmen, Schuerholz, Benjamin, Robinson, Miles, and Jackson were turned into varsity material. There still remained the veterans, Neubert, Hoppe, J. Collins, W. Collins, Fetter, Kirby, Dudderar, Pinto, Storm, Watson, Bartolini, and Dougherty to give us a good team.

Considering the stiff opposition, the season can be determined a successful one, even though we won only 3 games out of 7. Playing strong teams like Mt. St. Mary, Delaware, and Dickinson, we were able to score 63 points to our opponents 73. During the latter part of the season, the team was greatly weakened by having Dougherty, Bartolini, Robinson, and Schuerholz injured.

Season's high spots: The Swarthmore game was a heart-breaker to lose since the Maroons were aggressive during the entire game, and had the ball within 10 yards of the goal line three times in the last quarter. In the Hopkins game, the Shoremen displayed their real power, offensively and defensively, especially in the former by hard line smashes. At Juniata, the Maroons again won from the favored and heavier Juniata team, mostly by the aerial route.

Six players will be lost by graduation: Howard "Yank" Neubert, end, who has played four years of varsity football, making the All-Maryland second team last year and first team this year; "Chuck" Collins, guard, who has been "old-Reliable" for four years and whose loss will certainly be felt; Bill Collins, end, who has served three years on the varsity; Bill Smith, end, who has played two years varsity; Harry Hoppe, a hard-driving back, who has proved to be real varsity in his last two years; John Stack, guard, a two-year varsity man. Another man on the All-Maryland team this year was Charles Fetter, a Junior.



Neubert



Bartolini



Rayne



Smith



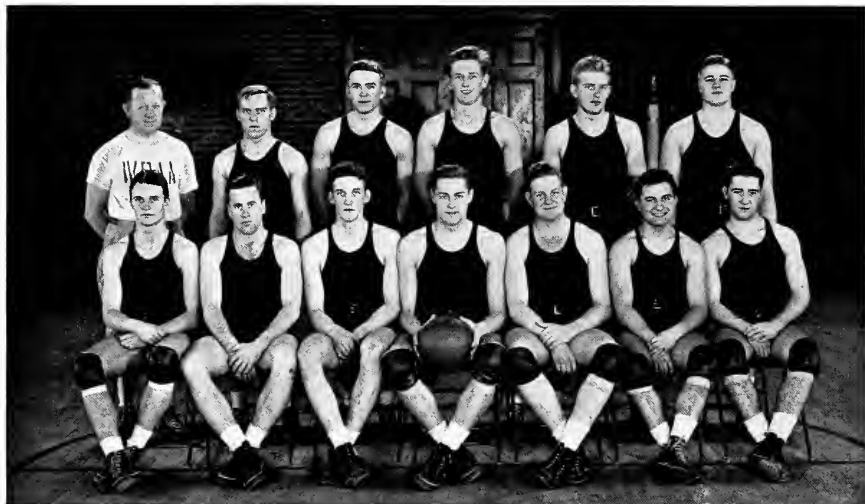
Palmerini



Pinto



Hoppe



Top: Coach Dumschott, Bremer, Lovesky, Benjamin, Bush, Kirby.
 Bottom: Stevens, Collins, McNiff, Neubert, Fetter, Kardash, Schuerholz.

Neubert



Fetter

BASKETBALL

SEASON'S RECORD

Washington.....	51	Villanova	54
Washington.....	25	Swarthmore	55
Washington.....	53	La Salle	46
Washington.....	58	West Chester Teachers.....	53
Washington.....	56	Mt. Lebanon	62
Washington.....	40	Duke	45
Washington.....	45	Florida	50
Washington.....	49	Brooklyn College	42
Washington.....	26	Baltimore University	44
Washington.....	49	Johns Hopkins	57
Washington.....	46	Towson	21
Washington.....	46	Mt. St. Mary's.....	28
Washington.....	26	Loyola	56
Washington.....	44	Baltimore University	41
Washington.....	50	Western Maryland	59
Washington.....	59	Catholic University	55
Washington.....	29	Mt. St. Mary's.....	52
Washington.....	52	P. M. C.	47
Washington.....	78	University of Delaware.....	57
Washington.....	50	Western Maryland	52
Washington.....	50	University of Delaware.....	55
Washington.....	40	Loyola	55
Washington.....	55	Catholic University	51
Washington.....	46	Johns Hopkins	59



McNiff



Stevens



J. Collins



Schuerholz



Kardash

This year the Flying Pentagon had a successful season, although the Maryland Intercollegiate League championship was lost. The Maroons won fourteen games out of a schedule of twenty-five, and meeting some of the best teams in the East, such as Villanova, La Salle, Baltimore U., Loyola and Duke.

Some of the highlights of the season were: The Duke game, which all thought would be one-sided, turned into a very exciting match when the Maroons scored 15 points in the second half without the opponents scoring any. With only three minutes to go, a difference of three points, the "Blue Devils" froze the hall and the Maroons tried in vain to recover. The Baltimore U. game at home with the Shoremen entering the fray as underdogs and the opponents having the "hottest" team in the history of the institution. The home team turned out its best performance of the season and

actually did the unbelievable to beat this great team. Coach Kibler retired after twenty-five years of capable service and was replaced by "Dutch" Dumschott, who did a fine job of directing the team.

Memories of the graduating stars will live long after they are gone. Neubert, with his peculiar two-handed over-head shot, which never failed, was second high scorer in the state and was picked on the "All-Maryland" team. "Holler Guy" Kardash, the peppiest man on the squad, was picked on the "All-Maryland" second team, "Chuck" Collins and his "sensational" shots which pulled many a game out of the fire. We still have with us: McNiff, the smoothest man on the squad, Fetter, the scrappiest player, Schuerholz and Stevens, the two fastest men on the team, and the former received honorable mention for the "All-Maryland" team.



Top: Coach Kibler, Claggett, Galvin, Messick, Rayne, Corley, Dulin, Maguire, Patterson, Aycok, Greene.
 Middle: Munyan, Tomlinson, Krometis, Thawley, McCauley, Lore, Rank, Benjamin, Schuerholz, Robertson.
 Bottom: Bremer, Smith, Selby, Rayne, Fetter, Bush, Kardash, Coppel, Everett, Stevens.

BASEBALL

SCHEDULE

April 10—Hartwick	Home	May 1—Gettysburg	Home
April 15—Delaware	Home	May 5—Western Maryland	Away
April 16—Loyola	Away	May 4—Mt. St. Mary's	Away
April 17—State Teacher's	Home	May 10—Hampden-Sydney	Home
April 20—Lebanon Valley	Home	May 11—Delaware	Away
April 24—Dickinson	Away	May 15—Western Maryland	Home
April 25—Lebanon Valley	Away	May 18—Mt. St. Mary's	Home
April 27—Maryland	Home	May 22—State Teacher's	Away
April 29—Easton	Away	May 25—Loyola	Home

The 1940 Washington baseball team, with its positions well fortified with the return of eight of last year's lettermen and strengthened by the addition of a crop of newcomers, looks forward to a very successful season. It should be able to successfully defend its Maryland Intercollegiate Conference crown which has been held for the last five years.

The Kiblermen lost two valuable players by graduation in Howard Pfund, catcher, and Grit Urie, outfielder. Among those lettermen returning are "Lefty" Coppel, "Long John" Selby and Harold Rayne, making up a pitching staff well worth bragging about. Other lettermen returning are Joe Bremer, Jimmy Stevens, Bobby Everett, Mike Kardash, and Charlie Fetter.

Joe Bremer will take a new place on the team when he dons a catcher's mask once again. Joe has had much experience at this new position through three years of high school. This change should help balance and strengthen the team.

With such material available this new edition of the "Shoremens" should be able to repeat, if not better, the fine record of only two defeats suffered last year. Defeat of our rival, University of Maryland, is the ultimate aim of the Kiblermen.



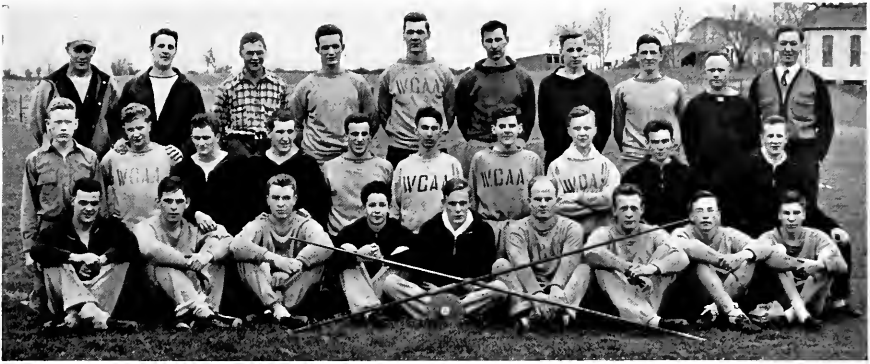
Kardash



Coppel



Everett



Top: Coach Ekaites, Sohl, Taylor, Pinto, Storm, Warther, Corley, Carter, VanDeman, Nelson.
 Middle: Harris, Miles, Jackson, Wood, Galulo, Ford, Roe, Meiser, Ford, McCalley.
 Bottom: Bartolini, Walk, Ruark, Dorf, Buck, Smith, Criss, Jones, Stevenson.

TRACK

SCHEDULE

April 12—Western Maryland	Away
April 19—Blue Ridge and Juniata	Home
April 26—Penn Relays	Away
May 4—Hopkins	Home
May 8—Delaware	Home
May 10-11—M. A. S. C. A. A.	Away
May 18—Mason-Dixon Meet	Away

Track, a sport slow in establishing itself at Washington College, will feel keenly this season the loss of three of our best natural runners, Tully, Watson and Coleman, who were experienced and versatile in every phase of this sport. With no sure-fire bets in the line-up as in the past campaigns, success this year will depend largely on the consistency of the entire team to snare points through the weaknesses of their opponents. It appears that the chief weaknesses of the Ekaitts-men are found in the field events and the hurdles.

The outstanding members of the cinder path are: Veterans, Ed Buck, who will be the mainstay in the 220 and 440, Mac McCalley in the mile, Bill Ford in the two mile, Sam Ford in the hurdles and distances, and Bill Buckingham in the 880. Promising Freshmen, Jackson in the 100, 220 and broad jump, and Steele in the 440 and 220. Those outstanding in the field events such as discus, javelin, shot put and pole vault are: Veterans, Pinto, Storm, and Partolini; Freshmen, Walk, C. Smith, and VanDeman. Other members of the squad are Gallulo, Miles, Stevenson, Wharther, Wood and Gorman, who will prove to be point getters.



W. Ford



S. Ford



E. Buck



Top: Covington, Paca, Smith, Dr. Tolles, Clark, Medford.
 Bottom: Shockley, Nagler, Davis, Johnson.

TENNIS

SCHEDULE

April 16—Loyola	Away	May 11—Western Maryland	Home
April 20—State Teacher's	Home	May 16—Delaware	Away
April 27—Western Maryland	Away	May 18—Mt. St. Mary's.....	Home
May 1—Delaware	Home	May 23—Loyola	Home
May 4—Mt. St. Mary's.....	Away	May 31—Wyomissing	Home

With the return of an experienced team the outlook for the 1940 tennis season is bright. Last year's squad proved the most successful in the team's history, and with the re-appearance of such racquet-wielders as Bill Nagler, Ed Davis, Bill Johnson, and Ernie Shockley, Washington College should establish itself as one of the leaders in tennis competition.

The turnout of an ambitious group of newcomers and the return of Bill Smith and Tommy Eliason should fill the vacancies made by the graduation of Zebrowski and Kaufman.

This year's team is under the capable direction of Dr. Winton Tolles. "Prof" is experienced on the courts and his knowledge should help to improve the team's record. Under his tutelage, the team should be even more successful than last year's.

Having a ten-game schedule, the results of the team's encounters should go a long way toward placing tennis among the recognized varsity sports of Washington College.



*Top: Blackwood.
 Third Row: Newton, Steele, Hoopes.
 Second Row: Zaffere, White, Wheatley.
 Bottom: McCardell, Gardner, Hollingsworth, Brown, Perry.*

BOARD OF MANAGERS

President	Ann Hollingsworth
Vice-President.....	Margaret Gardner
Secretary-Treasurer	Priscilla Brown

The Board of Managers, selected from the Women's Athletic Association, chooses all class teams, schedules games, and names the Honorary Varsity teams at the end of each season. Each year, the Board makes an award to each senior girl who has participated in two major sports for four years, who has been a member of the Honorary Varsity in at least one sport, and who has received her maroon "W," obtained by the accumulation of one thousand points in one year. The points are earned not only by participation but by training, hiking, roller skating and any other activity the Director may choose to recognize.

The Board, composed of representatives of each class, is a non-partisan organization, existing solely to delegate the control of girls' athletics in the college to the students who participate. Its two greatest aims are the recognition of superior ability displayed by teams and individuals, and the maintenance of enthusiasm and interest in girls' sports on the campus.



Upper: Zaffere, Brown, Rogliano.
 Middle: Spry, Hollingsworth, Gardoer, Perry, Somers.
 Lower: McCardell, Newton, Hoopes, Todd.

HONORARY VARSITY HOCKEY

The hockey seasons prove to be more successful each year, for the competition is steadily increasing. The Seniors, with their experience, managed to secure the pennant this year with little difficulty. However, the general technique and coordination of the teams, particularly of the underclassmen, have improved noticeably—all of which makes hockey continue to be the favorite sport.

SCORES

Seniors	1	Freshmen	2	Sophomores	0	Juniors	1
Seniors	1	Juniors	0	Freshmen	0	Sophomores	0
Seniors	1	Sophomores	5	Juniors	0	Freshmen	0

Every year an Honorary Hockey Varsity is selected from the class teams by the Board of Managers. This year the positions of the players, with ability and performance, were taken into consideration. The following team was selected:

Center Forward.....Shirley de Guzman
 Left Wing.....Ann Hollingsworth
 Center Halfback.....Margaret Gardoer
 Right Halfback.....Frances Perry
 Goal Keeper.....Margaret Spry
 Left Fullback.....Louisa Hall
 Right Fullback.....Minnie Somers
 Left Halfback.....Katherine Todd

Right Wing.....Virginia Hoopes
 Right Inner.....Katharine McCardell
 Left Inner.....Catherine Newton
 Honorable mention was awarded to:

Evelyn White
 Priscilla Brown
 Agnes Zaffere
 Rachel Rogliano



Upper: Brown, Pitt, Dockhorn.

Lower: Newton, Gardner, Quinn, White, Hall, Hoopes.

HONORARY VARSITY BASKETBALL

This year, for the first time, six good teams battled for the championship instead of the usual inter-class four. Both the Freshmen and Sophomores had two teams on the floor. Out of this, the Seniors, with its superior knowledge of basketball technique, emerged as victors, having lost only one game. So it was not surprising to find that three forwards and one guard were chosen from the Senior team as members of the honorary varsity.

The Junior team pulled the surprise of the year when they suddenly adopted offensive tactics and proved themselves worthy opponents to every team they met. From the two teams of the Sophomore class, Catherine Newton and Virginia Hoopes, guards, easily made the honorary varsity by superior floor play.

Honorable mention was given to Betty Dockhorn, Priscilla Brown, guards, and to Betty Beck, and Peggy Pitt, forwards.

CLASS BASKETBALL

Basketball season this year was undoubtedly the most successful one in years. More girls turned out, the Freshmen and Sophomores had two teams, more competition was offered, and more games played than in the history of the college. The Seniors won the title by winning the last game of the season.

Class League Final Standing

Seniors	First	Juniors	Fourth
Sophomore B'	Second	Sophomore A	Fifth
Freshmen B	Third	Freshmen A	Sixth

The players chosen by the Board of Managers for the Honorary Varsity were: Peggy Quinn, Margaret Gardner, and Evelyn White, forwards; Louisa Hall, Virginia Hoopes, and Catherine Newton, guards. Honorable mention was awarded to: Priscilla Brown, Betty Dockhorn, Peggy Pitt, and Betty Beck.



Top: Russel, Bishop, Lyon, Blackwood, Culver, Dockhorn, P. Peters, E. Peters, Todd, Cooper.
 Third Row: Rogliano, Johans, Newton, Pitt, Undy, Nardi, Hoopes.
 Second Row: Dulin, Wallace, Leland, Wheatley, Brown, Nocke, Monroe, Price, Zaffere, Taylor.
 Bottom: Quinn, Gardner, White, Crew, Hall, Hollingsworth.



Gardner

White

Dulin

MAROON "W" GIRLS

The maroon "W" is won by those girls who have accumulated one thousand points in one year. The points are obtained not only by participation in the major sports, but by training, hiking, exercises, and any other activities that the athletic director may choose to recognize.

A silver cup is awarded to the girl who accumulates the greatest number of points.

For the past few years the Athletic Department has attempted to include more sports and to increase the interest in the various sports on the campus. Last year archery and tennis with hockey and basketball were stressed as the major sports. In place of the annual June Fete, this year the department has introduced badminton and ping pong as major sports.

RECOGNIZED GIRLS' SPORTS

Thus far, interest has been marked and competition keen.

Included in the minor sports are roller skating, fencing, bicycling, hiking, and horseback riding.



Hoopes, Gardner, Pitt, White, Dockhorn, Newton, Brown



OUTSTANDING IN GIRLS' SPORTS

MARGARET GARDNER

This spring the Board of Managers adopted a new honor to be conferred on a Senior woman. It was decided that the most outstanding woman athlete in the Senior class be given recognition. From the Class of '40 the Board selected Margaret Gardner as the best all-around athlete. Margaret has participated in every sport on the campus, making the Hockey Varsity in her Junior and Senior years. She secured a berth on the Basketball Varsity this year as a forward. In archery, she remains the unbeaten champion, and she has accumulated more points for her Maroon "W" than has any woman on the campus. For the past two years Margaret has served on the Board of Managers and in her Senior year was elected vice-president.



FEATURES



1939

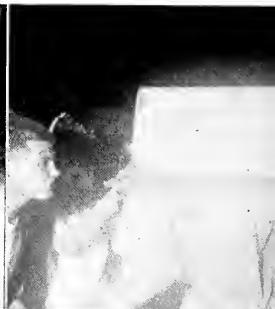
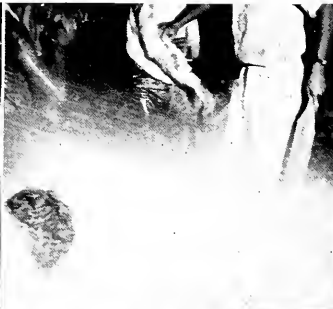
JUNE FETE

JUNE FETE

1939



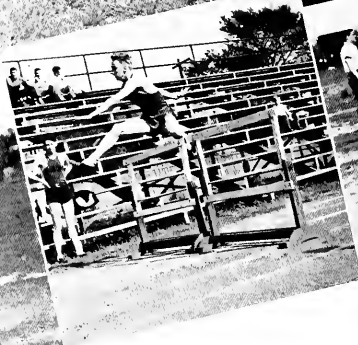
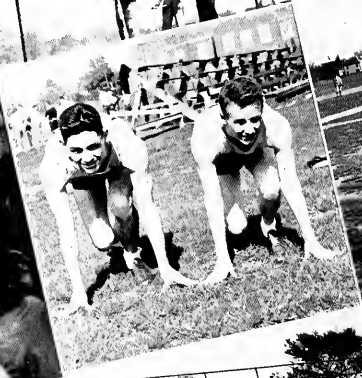
JUST RATS





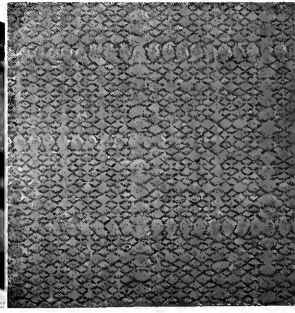
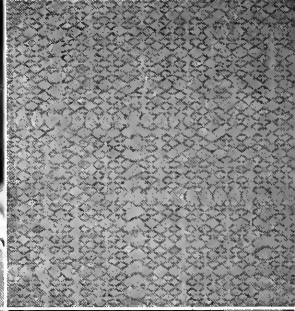
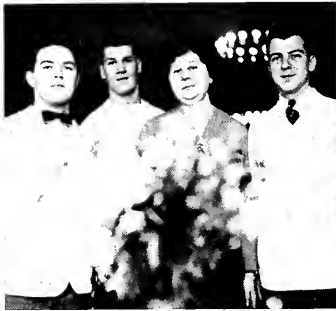
CAMPUS CASUALS

SPORTS





SPORTS



CAMPUS CASUALS

CAMPUS CASUALS



ROSTER, 1939 - 40

SENIORS

Anderson, Owen Raymond, Jr.	Chestertown, Md.
Baynard, Frank Oram.....	Chestertown, Md.
Beckwith, Walter Lee.....	Magnolia, Del.
Buck, Edward Robinson, Jr.	St. Michaels, Md.
Caplan, Evelyn Barrie.....	2407 Brookfield Avenue, Baltimore, Md.
Claggett, Walter White.....	Easton, Md.
Clark, Robert Lee, Jr.	303 East 29th Street, Baltimore, Md.
Collins, John Lawrence.....	812 4th Street, Ocean City, N. J.
Collins, William Jenkins.....	111 Naylor Street, Salisbury, Md.
Copple, John Addis.....	Wallingford, Pa.
Crawford, Henry Van Bibber.....	Galena, Md.
Crew, Helen Virginia.....	Chestertown, Md.
Cronin, William Baker.....	Aberdeen, Md.
Davis, Edward Phillip.....	Market Street, Snowhill, Md.
Davis, John Cooper.....	Templeville, Md.
Dryden, Alton Edward, Jr.	Princess Anne, Md.
Dudley, Norman Spear, Jr.	Church Hill, Md.
Elliott, Joe Sire, Jr.	Ocean City, Md.
Ennis, Charles Elwyn.....	Marydel, Md.
Everett, Robert Lewis.....	Kenton, Del.
Ford, Samuel Franklin	Millington, Md.
Ford, William Huey.....	Millington, Md.
Gardner, Mary Margaret.....	Greensboro, Md.
Glass, Walter Adelbert.....	Galena, Md.
Glock, Milton Frederick Valentine.....	615 Elmwood Road, Raspsburg, Md.
Grieb, George Erey.....	Deep Point Farm, Chestertown, Md.
Hall, Louisa Faithful.....	Church Hill, Md.
Helditch, Marion Doris.....	222 S. Stokes Street, Havre de Grace, Md.
Hollingsworth, Margaret Ann.....	Church Hill, Md.
Hoppe, John Henry Earl, Jr.	Engleside, R. F. D. No. 1, Alexandria, Va.
Horner, Joshua.....	Aigburth Avenue, Towson, Md.
Johnson, William Benjamin.....	237 South Division Street, Salisbury, Md.
Jones, Dorothy Evelyn.....	2514 Lauretta Avenue, Baltimore, Md.
Jones, William Henry, Jr.	151 I Street, Carney's Point, N. J.
Leary, William Leonard.....	Rock Hall, Md.
Los Kump, Helen Moores.....	Locust Grove, Md.
Maguire, Elizabeth Ann.....	19 Fenwick Park, Penns Grove, N. J.
Matthews, Donald Emerson.....	Cambridge, Md.
Mayes, Sara Adalin.....	Timonium, Md.
McAdams, William Alfred.....	57 W. Washington Street, Hagerstown, Md.
McCabe, Edward Lee.....	Bishop, Md.
McCardell, Katharine Bridges.....	517 F Street, Sparrows Point, Md.
Medford, William Edward.....	3301 St. Paul Street, Baltimore, Md.
Micari, Frederick Sylvester	51 Kelley Street, Bristol, Conn.
Miller, Charles Edward.....	4 North Gorman Avenue, Baltimore, Md.
Nittleholzer, Muriel Margaret.....	419 33rd Street, North Bergen, N. J.
Moore, Robert Etheridge.....	La Plata, Md.
Morse, Mark Perkins.....	Salisbury, Md.
Nash, Gerry Finley.....	4 Iona Avenue, Narberth, Pa.
Nelson, Dorsey Cook.....	Centreville, Md.
Neubert, Howard Hale.....	67 Sunnyside Avenue, Waterbury, Conn.
Ohler, Edwin Allen.....	4 West Main Street, Emmitsburg, Md.
Perry, Frances Spencer.....	Centreville, Md.
Powell, Elizabeth Mae.....	Centreville, Md.
Quinn, Margaret Virginia.....	Chestertown, Md.
Rawley, Clarence Gardner, Jr.	Leipsic, Del.
Riedy, Alexander Noble.....	Chestertown, Md.

Schnaper, Nathan.....	5506 Auchenoroly Terrace, Baltimore, Md.
Scott, Omar Wilson.....	Princess Anne, Md.
Shaul, Charlotte Bernhardt.....	5422 Frederick Avenue, Baltimore, Md.
Shockley, Joshua Ernest.....	Salisbury, Md.
Silcox, Harriet Virginia.....	Betterton, Md.
Smith, William Arnold.....	2817 Mosker Street, Baltimore, Md.
Somers, Elizabeth Minnesota.....	Denton, Md.
Spry, Margaret Elizabeth.....	Bethel, Del.
Stack, John Rumbold.....	Crumpton, Md.
Stevens, Benjamin Ralph.....	Millington, Md.
Taylor, Walter Rowland, Jr.	2525 West Lafayette Avenue, Baltimore, Md.
Thomas, Ruth	Chestertown, Md.
Thornton, Ralph Rees.....	Worton, Md.
Todd, Jennings Willey.....	Wingate, Md.
Walatkus, William Peter.....	Kitzmilller, Md.
White, Laura Evelyn.....	Stevensville, Md.
Whitney, Rita Marie.....	Chestertown, Md.
Williams, Alice Mae.....	25 New England Road, Maplewood, N. J.

JUNIORS

Baldwin, George Walker, Jr.	Chestertown, Md.
Benjamin, William Clyde, Jr.	Chestertown, Md.
Bexley, Nellie Katherine.....	Chestertown, Md.
Brady, Frank Joseph.....	2707 Riggs Avenue, Baltimore, Md.
Bremer, Joseph George.....	2101 Fairmount Avenue, Baltimore, Md.
Brown, Margaret Priscilla.....	Centreville, Md.
Brown, Rosemary Josephine.....	11405 105rd Avenue, Richmond Hill, N. Y.
Buckingham, William Andrew.....	2807 Ailsa Avenue, Baltimore, Md.
Bush, James Orville, Jr.	Annapolis, Md.
Clarke, David	Ellicott City, Md.
Cooke, Raymond Jervis.....	Cordova, Md.
Cooper, Edward Wesley	2805 Strathmore Avenue, Baltimore, Md.
Cooper, Harry Douglas	Greensboro, Md.
Davis, Samuel R., Jr.	Federsburg, Md.
Dawson, Willard Hall, Jr.	Trappe, Md.
Donkas, James A.	516 St. John's Street, Havre de Grace, Md.
Dulin, Evelyn Elizabeth.....	Centreville, Md.
Fetter, Charles Edward.....	1501 Lakeside Avenue, Baltimore, Md.
Fraser, John Donnell.....	4018 Barrington Road, Baltimore, Md.
Gallagher, Josephine	Preston, Md.
Hackett, William Oliver.....	Henderson, Md.
Hartnett, Francis Reed.....	Elkton, Md.
Hendrickson, Harry Crew.....	Still Pond, Md.
Hess, Ogle Wilton.....	Hancock, Md.
Holden, Marguerite Annabelle.....	Sudlersville, Md.
Hopkins, Ralph Wendel.....	Crumpton, Md.
Jefferson, Mary Esther.....	Smyrna, Del.
Kardash, Michael.....	501 South Bond Street, Baltimore, Md.
Leland, Jean May.....	4401 Ethland Avenue, Baltimore, Md.
Leonard, Dorothy Virginia.....	St. Michaels, Md.
Loovis, Regina Caswood.....	5805 Edmondson Avenue, Baltimore, Md.
McCalley, Laurence Edwin, Jr.	5008 Morello Avenue, Baltimore, Md.
Monroe, Mary Jane.....	24 Irving Street, Spencer, Mass.
Morton, Henry Scott, Jr.	Forest Glenn, Md.
Nock, Virginia White.....	Pocomoke City, Md.
Palmerini, Joseph Dominic.....	55 Brook Street, Waterbury, Conn.
Phillips, John Denny.....	Goldsboro, Md.
Price, Mildred Ellen.....	156 Wood Street, Frostburg, Md.
Rayne, Harold Jackson, Jr.	Ocean City, Md.
Russell, Charlotte Redue.....	Chestertown, Md.
Selby, John William.....	Delmar, Md.
Spielman, James Samuel.....	140 E. Washington St. Hagerstown, Md.
Steinborn, Chadotte.....	5150 Colerain Avenue, Cincinnati, Ohio

Stradley, Price Roe.....	Galena, Md.
Taylor, Irma Mne Frances.....	Princess Anne, Md.
Turner, Margaret Anne.....	Chestertown, Md.
Wallace, Norma Esther.....	140 East 63rd Street, New York City
Westcott, Helen Blanchard.....	Chestertown, Md.
Wharton, Albert Watson.....	252 North Governors Avenue, Dover, Del.
Wheatley, Jean Bowers.....	Federalsburg, Md.
Zaffere, Agnes Elvira.....	Federalsburg, Md.

SOPHOMORES

Bartolini, David.....	7 Thomas Street, Waterbury, Conn.
Blackwood, Sara Douglas.....	848 Turner Avenue, Drexel Hill, Pa.
Bordley, Ellen Cochelle.....	Chestertown, Md.
Brice, Margaret Ann.....	Chestertown, Md.
Brittingham, Walter Dix.....	Chestertown, Md.
Brooks, Mildred Beulah.....	5509 Rueckert Avenue, Baltimore, Md.
Brown, Hampton Emery, Jr.	Centreville, Md.
Carter, Robert Emerson.....	Berlin, Md.
Chaires, William Francis.....	Queen Anne, Md.
Clark, Basil Crawford.....	Ellicott City, Md.
Corley, Robert Norman.....	116 Laurel Hill Road, Mt. Lakes, N. J.
Crane, Robert Kellogg.....	Chestertown, Md.
Davis, Lloyd Robert.....	Federalsburg, Md.
de Guzman, Shirley Faith.....	442 Lawn Ridge Road, East Orange, N. J.
Dincumakos, James Nicholas.....	Dupont Highway, Smyrna, Del.
Dorf, Milton Irving.....	Chestertown, Md.
Dougherty, James Edward.....	28 William Street, Waterbury, Conn.
Dudderat, Raymond Albert.....	2025 Woodland Avenue, Baltimore, Md.
Effland, John Edward, Jr.	527 Pearre Avenue, Cumberland, Md.
Eliason, Thomas Walker, Jr.	Chestertown, Md.
Garrison, Mortimer, Jr.	40 East Avenue, Bridgeton, N. J.
Gordon, Ann Murray.....	Hilton Court Apartments, Liberty Heights Avenue, Baltimore, Md.
Green, Jesse Henry, Jr.	Penns Grove, N. Y.
Guggenheim, Kenneth Wilbur.....	Center Moriches, N. Y.
Harris, John Algayer.....	Bellaire, Md.
Hoopes, Virginia Street.....	Darlington, Md.
Humphreys, Mary Elizabeth.....	Chestertown, Md.
Johanns, Alice Augusta.....	Bloomsbury Avenue, Catonsville, Md.
Johnson, Rufus Clay.....	Salisbury, Md.
Jones, Jerome Calvert, Jr.	Chester, Md.
Kepler, Atlee Calvin.....	Middletown, Md.
Kintner, Margaret Esther.....	Perryville, Md.
Kintner, Mary Ann.....	Perryville, Md.
Kirby, Allen Rayfield.....	Chestertown, Md.
Kirwan, John Philip.....	Cambridge, Md.
Koons, Walter Scott, Jr.	147 East Hilgreth Avenue, Wildwood, N. J.
Kreeger, Frances Elizabeth.....	Chestertown, Md.
Krometis, August Angelo.....	647 North Bentalou Street, Baltimore, Md.
Larmore, Ernest Marcellus, Jr.	Tyaskin, Md.
Littleton, Oliver Wilbert, Jr.	5111 Tyndale Avenue, Baltimore, Md.
Livingston, Robert Lee.....	Salisbury, Md.
Logan, William Robert.....	Chestertown, Md.
Lore, Harry Elmer, Jr.	Cedarville, N. J.
Lovesky, Edmund Theodore.....	23 Wales Street, Waterbury, Conn.
Maguire, Henry Francis.....	142 Randolph Avenue, Jersey City, N. J.
Mead, Francis Hudson.....	Chestertown, Md.
Messick, Jean Wadsworth.....	Bivalve, Md.
Murray, Norma Lee.....	Princess Anne, Md.
Nagler, William Michael, Jr.	5641 Philadelphia Avenue, Baltimore, Md.
Newton, Catharine Elizabeth.....	Chestertown, Md.
Paca, William Winchester, Jr.	Chestertown, Md.
Patterson, Rebekah.....	Rolling Road, Woodlawn, Md.

Petry, Maria Theresa.....	Millington, Md.
Pinto, George John.....	Salisbury, Md.
Pitt, Margaret Ayars.....	Port Deposit, Md.
Poughkeepsie, Frederick Howard.....250 Alliance Street,	Havre de Grace, Md.
Quillin, Robert Hazzard.....	Ocean City, Md.
Riedy, Wilson Lobach.....	Chestertown, Md.
Roe, Charles Archie.....	Centreville, Md.
Rogliano, Rachele Rita.....	Tuckahoe, N. Y.
Russell, Mary Landon.....	Chestertown, Md.
Sewell, Miriam Virginia.....	Chestertown, Md.
Smith, Charles St. John.....	Carney's Point, N. J.
Smith, Donald Willard.....1612 East 50th Street,	Baltimore, Md.
Smith, Francis Auvan.....	Rising Sun, Md.
Smith, Irving Russell.....	Parsonsburg, Md.
Smith, John Webster.....	Federalburg, Md.
Sohl, George Nelson, Jr.101 East Mt. Royal Avenue,	Baltimore, Md.
Souder, Philip Boyer.....	Monrovia, Md.
Speicher, Sarah Isabelle.....	Chestertown, Md.
Starr, Elsie Marjorie.....	Galena, Md.
Steele, Minor Porter.....	"Hokeland," Havre de Grace, Md.
Sterling, William Maxwell.....	Cambridge, Md.
Stevens, Virginia Elizabeth.....	Pocomoke City, Md.
Stevenson, Thomas Watts.....	Mountain Lake Park, Md.
Sutton, William Oliver.....	Kennedyville, Md.
Undy, Marjorie Anne.....	Penns Grove, N. J.
Walbert, Walter Lee, Jr.	Chestertown, Md.
Watson, Edward Morris.....	Salisbury, Md.
Williams, John Wright, Jr.	Box 251, Anacostia, D. C.
Wood, Charles Edgar, Jr.5307 Harford Road,	Baltimore, Md.

FRESHMEN

Adkins, Steven.....	West Main Street, Salisbury, Md.
Arden, William Ward.....	Mountain Lakes, N. J.
Aycock, James Melcher.....5119 Ferndale Avenue,	Baltimore, Md.
Baldwin, William Stewart.....	Chestertown, Md.
Beck, Elizabeth Mackey.....	Chestertown, Md.
Beecher, Harold Joseph.....61 Walnut Avenue,	Waterbury, Conn.
Benjamin, William Herman.....	Trainer, Pa.
Betts, William Burke.....	Crisfield, Md.
Bishop, Mary Edith.....	Showell, Md.
Blackwood, Mary Douglas.....848 Turner Avenue,	Drexel Hill, Pa.
Boyer, Edwin Risdon, Jr.631 Linnard Street,	Baltimore, Md.
Brandt, Walter Clark.....4202 Oakford Avenue,	Baltimore, Md.
Brice, Margaret Ann.....	Chestertown, Md.
Brown, Madison.....	Centreville, Md.
Brutz, Carl Edmund.....26 Bennitt Street,	New Milford, Conn.
Buckheit, James Edward.....	Rock Hall, Md.
Burbage, James Richard.....	Berlin, Md.
Burrell, Molly Stewart.....	Earleville, Md.
Caldwell, Henry Thomas, Jr.	Chesapeake City, Md.
Campbell, Mary Elliott.....	Bellevue, Md.
Carney, John Calvin, Jr.5615 Liberty Heights Avenue,	Baltimore, Md.
Catlin, Rupert William.....	Crisfield, Md.
Chittum, Charles Thomas.....119 Rosewood Avenue,	Catonville, Md.
Cissel, William Howard.....	Hebron, Md.
Cooper, Virginia Louise.....2805 Strathmore Avenue,	Baltimore, Md.
Coppage, George Herman, Jr.	Pearson, Md.
Coram, Walter Lance.....	Bridgeville, Del.
Covington, Royston Truitt.....425 Drury Land,	Baltimore, Md.
Crawford, Andrew Woodall.....	Galena, Md.
Criss, James Alan.....4416 Wickford Road,	Baltimore, Md.
Culver, Helen Marie.....	Chestertown, Md.

Decker, Mary Anne	Elkton, Md.
Dempsey, Robert Norman	Kennedyville, Md.
Dockhorn, Betty Porter3507 Echodale Avenue,	Baltimore, Md.
Dorf, Shirley Evelyn	Chestertown, Md.
Dudley, Phillip Lee Travers	Church Hill, Md.
Dukes, Margaret Anne	Chestertown, Md.
Dulin, Charles Wesley	Worton, Md.
Dunn, Mary Mitchell112 Indian Hill Boulevard,	Claremont, Calif.
Eliason, John Cree	Chestertown, Md.
Enmord, Ralph Frederick	Perryman, Md.
Engel, Martin Jay	Mountain View Country Club, New City, N. Y.
Fairchild, Helen Judith	Salisbury, Md.
Fenderson, Margaret Ann	Chey Chase, Md.
Ford, Anne Dudley	Kennedyville, Md.
Fox, Merhle Morton	Chestertown, Md.
Galullo, Louis James20 Alder Street,	Waterbury, Conn.
Galvin, Thomas Francis5 Newell Place,	Waterbury, Conn.
Gill, Harriett Lucinda	Chestertown, Md.
Gorman, Andrew Robinson120 North Schott Avenue,	Glenolden, Pa.
Grine, Patricia Anne	Rock Hall, Md.
Hall, William Price	Monie, Md.
Hallman, Harold Taylor	Wye Mills, Md.
Harris, Frances Ann	Chestertown, Md.
Hess, Rachel Elizabeth	Jarrettsville, Md.
Hill, Robert Raymond, II	Kennedyville, Md.
Hirsch, Doris Ruth51 Grant Place,	Red Bank, N. J.
Hitch, Robert Norman, Jr.	Queenstown, Md.
Holdt, Robert Paul V.4511 Arabia Avenue,	Baltimore, Md.
Hubbard, Elinore Dian	Chestertown, Md.
Jackson, Samuel Omar, Jr.1914 East 30th Street,	Baltimore, Pa.
Jarrell, Frances Emma	Millington, Md.
Jones, William Irving, Jr.4205 Oakford Avenue,	Baltimore, Md.
Kaylor, Nelson William25 Oak Street,	Cumberland, Md.
Kittrell, William Allen855 Glen Allen Drive,	Baltimore, Md.
Lewis, Edna Leslie	Groveville, N. J.
Lussier, Betty Ann	Rock Hall, Md.
Lyon, Jane Crosby194 East Commerce Street,	Bridgeton, N. J.
Marsh, Leon Carrollton, Jr.102 Lexington Avenue,	Pitman, N. J.
McCauley, Walter Ernest4401 Groveland Avenue,	Baltimore, Md.
McClellan, Donald Shoemaker205 Marlboro Road,	Ardmore, Pa.
McNiff, Francis Walter46 Williams Street,	Waterbury, Conn.
Meiser, Charles Herbert, Jr.	Stockton, Md.
Messick, Jean France2901 Hillcrest Avenue,	Baltimore, Md.
Miles, Southey Francis, Jr.1909 Chelsea Road,	Baltimore, Md.
Mills, Fred Willard, Jr.815 Mount Royal Avenue,	Cumberland, Md.
Mooney, Alhert Lee4007 Chesley Avenue,	Baltimore, Md.
Munyan, Robert Kenneth5 Merion Terrace,	Collingswood, N. J.
Nairo, Charles Belding827 Glen Allen Drive,	Baltimore, Md.
Nardi, Mary Bernice	Millville, N. J.
Parris, James Leonard	Dundalk, Md.
Petez, Joseph Anthony2518 Arctic Avenue,	Atlantic City, N. J.
Peters, Elizabeth Ellen2820 Riggs Avenue,	Baltimore, Md.
Peters, Phyllis Jane2820 Riggs Avenue,	Baltimore, Md.
Rank, William Irvin75 East Greenwood Avenue,	Lansdowne, Pa.
Reidt, Wallace Allan1022 Overbrook Road,	Baltimore, Md.
Rieck, Eleanor Amelia	Preston, Md.
Robinson, Frank Spencer24 Highland Avenue,	Morton, Pa.
Robinson, Helen Claire904 Morgan Avenue,	Palmyra, N. J.
Roe, William Medford Dudley	Sudlersville, Md.
Ruark, Paul Edwin, Jr.	Crisfield, Md.
Russell, Naomi Waters	Chestertown, Md.
Schuerholz, Wilson Joseph152 East Cross Street,	Baltimore, Md.
Silcox, Thomas Louis	Chestertown, Md.
Slade, Harry Montrose	Reisterstown, Md.

Smith, Ruth Alberta.....	Goldsboro, Md.
Steele, James Morrison, Jr.257	Lexington Avenue, Pitman, N. J.
Steinman, Wilbur LaMotte.....505	Ilchester Avenue, Baltimore, Md.
Stevens, James Arthur, Jr.2821	Winchester Street, Baltimore, Md.
Stockbridge, Robert Allen.....507	Woodside Road, Baltimore, Md.
Storey, Cora Virginia.....	Centreville, Md.
Strong, Helen Frances	Chestertown, Md.
Strong, Mary Jeanne	Chestertown, Md.
Sussman, Shirley Florence.....4119	Fernhill Avenue, Baltimore, Md.
Taylor, Francis, Jr.52	Progress Avenue, Woodbury, N. J.
Thawley, Robert Hooper.....	Denton, Md.
Tischer, Dorcas Joan.....	Greenhill Road, Dover, Del.
Todd, Kathryn Bradye.....	Wingate, Md.
Tomlinson, Joseph Hanson, III.....	Sykesville, Md.
Van Deman, Jack.....5	Wardell Avenue, Little Silver, N. J.
Walk, John Douglass.....1114	South 2nd Street, Millville, N. J.
Ward, Joseph Arthur, Jr.	Atco, N. J.
Warther, John Martin, Jr.651	Parkwyth Avenue, Baltimore, Md.
Waterman, Charles Marvin.....4915	Haddon Avenue, Baltimore, Md.
White, Eleanor Evans.....	Chestertown, Md.
Wieneke, Charles William, Jr.	Greensboro, Md.
Wolz, William Edward.....5750	Edmondson Avenue, Baltimore, Md.
Wood, Norma Jean.....5	Florida Road, Towson, Md.
Zajic, John Eugene, Jr.	Clinton, Md.

SPECIAL STUDENTS

Bell, Doris Thistle.....	Chestertown, Md.
Corley, Ralph Alexander, Jr.116	Laurel Hill Road, Mt. Lakes, N. J.
Cunningham, Laura Loskamp.....	Locust Grove, Md.
Jones, Ethel Spurgin.....	Chestertown, Md.





ADVERTISEMENTS

WASHINGTON COLLEGE

Founded 1782

MARYLAND'S OLDEST INSTITUTION OF HIGHER LEARNING
FULLY ACCREDITED LIBERAL ARTS COLLEGE
WITH A LIMITED ENROLLMENT.

HIGH IDEALS OF CHARACTER AND CITIZENSHIP
DEVELOPED THROUGH ONE HUNDRED AND
FIFTY-SEVEN YEARS OF EDUCATIONAL SERVICE.

MODERN CURRICULA, TO MEET THE NEEDS OF THE
STUDENT IN THE MODERN WORLD.

BROAD PROGRAM OF STUDENT ACTIVITIES AND
RECREATION. MODERATE FEES AND LIVING EXPENSES.

For Catalogue and Information — Address

WASHINGTON COLLEGE

CHESTERTOWN, M.D.

Yours Truly

Fox's 5c to \$1.00 Store

FOR GOOD ALL AROUND PERFORMANCE AND UNIFORMITY

SPECIFY

KIBLER'S CLEAN COAL

Phone 149

C. W. KIBLER & SONS

GRAIN — LIME — FERTILIZER

CUMBERLAND COAL
COMPANY

PRODUCERS WHOLESALERS
 RETAILERS
ANTHRACITE and BITUMINOUS
"STOKOL" STOKERS
217 E. Redwood St.
BALTIMORE MARYLAND

COMPLIMENTS

OF

Bond Baker's

THE FIRST NATIONAL BANK

OF CHESTERTOWN

STEPHEN R. COLLINS, President

T. D. BOWERS, Vice-President

W. R. HUEY, Cashier

R. R. WILKINS, Assistant Cashier

DIRECTORS

T. D. BOWERS
P. M. BROOKS
STEPHEN R. COLLINS
R. H. COLLINS
W. R. HUEY

G. ELLSWORTH LEARY
WALTER U. LUSBY
H. STOCKTON STARTT
R. WROTH STAVELY
ANDREW W. WILSON

MEMBER FEDERAL RESERVE SYSTEM

MEMBER FEDERAL DEPOSIT INSURANCE CORPORATION

THE
FITCH DUSTDOWN CO.
JANITOR SUPPLIES

801 S. Howard St.
BALTIMORE MARYLAND

Fulton Grand Laundry Co.

FINER GRADE LAUNDERERS

1719 E. Oliver St
BALTIMORE MARYLAND

GILL BROS.

ICE CREAM

GILL BROS.

"A" MILK

GILL BROS.

SODAS — SUNDAES

SANDWICHES

FOUNTAIN LIGHT
SERVICE LUNCH

We Don't Keep the Best
WE SELL IT

**BENNETT'S
SERVICE STATION**

W. S. Bennett, Prop. Phone 41

SOPHIE FISHER INN

One Block North of Chester River
Bridge. Route 213.

All Rooms with Private Baths
or Running Water.

BREAKFAST LUNCH
and DINNER

**THE
KENT COUNTY
SAVINGS BANK**
CHESTERTOWN, MARYLAND

Our Motto is
"SAFETY BEYOND ALL ELSE"

Fred G. Usilton, President
L. B. Russell, Vice-President
Harry C. Coleman, Cashier

ORVIS SHOP, INC.

COME IN AND
THRIVE
WITH US

O. J. STIME

**E. R. ANTHONY
FLORIST**

CHESTERTOWN, MARYLAND

Phone 283

J. S. KREEGER

JEWELER and OPTOMETRIST

Watches, Diamonds, Fountain Pens,
Novelties, Trophies, Kodaks,
and Films.

CHESTERTOWN, MD.

Phone 30

STAM DRUG COMPANY

"THE PRESCRIPTION STORE"

School Supplies, Whitman's Candies, Latest Magazines and Popular
Priced Fiction, Cigarettes, Cigars and Tobacco, Ice Cream,
Sodas, Squibb's Household Products.

PRESCRIPTIONS CAREFULLY COMPOUNDED
FROM FINEST QUALITY DRUGS

CHESTERTOWN

MARYLAND



COMPLIMENTS
OF

RED STAR
MOTOR COACHES
INCORPORATED

SALISBURY

MARYLAND



The People's Bank
of Chestertown

COMMERCIAL ACCOUNTS

SAVINGS ACCOUNTS

CHESTERTOWN, MARYLAND

ALWAYS UP TO DATE WITH THE
BEST BUILDING MATERIALS

E. S. ADKINS AND COMPANY

And Associated Yards

EVERYTHING NEEDED FOR BUILDING

Chestertown — Hurlock — Salisbury — Centerville — Easton — Berlin

THE ARUNDEL CORPORATION

BALTIMORE, MARYLAND

DREDGING — CONSTRUCTION — ENGINEERING

DISTRIBUTORS OF

SAND • GRAVEL • STONE

and

COMMERCIAL SLAG

THE WASHINGTON COLLEGE CO-OPERATIVE BOOK STORE

A STORE RUN FOR THE BENEFIT OF THE STUDENTS

We Offer a Line of Wahl Dollar Pens and Pencils, Pennants, Pillows,
Stickers, Stationery and School Supplies.

Hours: 8 to 12 A. M., 1:15 to 4:30 P. M. Every Day but Saturday and
Sunday. Saturdays, 8 to 12.

THE DAVIS CONSTRUCTION COMPANY

BUILDERS OF THE GEORGE A. BUNTING LIBRARY



9 West Chase Street

BALTIMORE, MD.

Phone, Vernon 8310

MARYLAND PRODUCT

FAMOUS THE WORLD OVER

From India to Australia—from China to the British Isles—as well as all over the United States and Canada, millions of jars of Noxzema Medicated Skin Cream are used each year.

Back in 1917, Dr. G. A. Bunting, Washington College '91, perfected the formula for this unique cream. Well received in Maryland, it soon found its way to the far corners of the world. Thousands everywhere have found it a veritable "Wonder Cream" for soothing relief from Sunburn, Chafing, Chapped Skin, etc. Scores of men use it as a base for lather or as a latherless Shaving Cream—women as a Night Cream and greaseless Powder Base.

NOXZEMA CHEMICAL COMPANY

BALTIMORE



MARYLAND

COMPLIMENTS OF
**THE CHESTERTOWN LIGHT AND POWER
COMPANY**

WESTINGHOUSE MAZDA LAMPS

Phone 333

CHESTERTOWN

MARYLAND

The
New Lyceum
Theatre

Let ESKAY Be Your Guarantee
to
Meats of Unmatched Quality

•

COMPLIMENTS OF
"The Enterprise"
KENT'S LEADING WEEKLY

PRODUCED BY
The
WM. SCHLUDERBERG-
T. J. KURDLE CO.
Baltimore Maryland

THE TRANSCRIPT

CHESTERTOWN, MD.

Photographic and Engraving Department

NEAT PRINTING OUR SPECIALTY

Dance Programs, Tickets, Placards, etc.

No Job Too Large — No Job Too Small

COMPLETE COVERAGE OF COLLEGE NEWS

PENNINGTON
CONSTRUCTION CO.
CONTRACTORS and BUILDERS

Estimates Furnished on Short Notice

Campus Avenue
CHESTERTOWN, MARYLAND
Phone 305 Box 287

BARNETT'S
BARBER
SHOP

THE COLLEGE
VALET

PARK CLEANERS

Phone 318-W

THE KENT NEWS

Established 1823

The Oldest but Ever New News-
paper in Kent County

FREDERICK G. USILTON
and
WILLIAM B. USILTON
Editors

THE
BELHAVEN
HOME OF GOOD FOOD

"Across the Street from the Campus"

CHESTERTOWN, MD.

Phone 211-M

WHEN YOU ARE HUNGRY OR
THIRSTY

The Chestertown
Restaurant

WILL TAKE CARE OF BOTH
NEEDS

Engravings by . . .

PHILADELPHIA - WEEKS
ENGRAVING COMPANY

Philadelphia, Pa.

Printing by . . .

LYON & ARMOR, Inc.

147 North Tenth Street

Philadelphia, Pa.

